



## The Heteroptera Collection *Ernst Heiss* at the Tiroler Landesmuseum Ferdinandeum. Part III: Cimicomorpha: Family Reduviidae

ERNST HEISS, ANDREAS ECKELT, MANFRED LEDERWASCH  
& ROMED UNTERASINGER

**Abstract:** The Heteroptera Collection *Ernst Heiss* at the Tiroler Landesmuseum Ferdinandeum. Part III: Cimicomorpha: Family Reduviidae. The large collection of true bugs (Heteroptera) of Ernst Heiss, with more than 75,000 specimens, was donated to the Tiroler Landesmuseum Ferdinandeum and is currently deposited at the Natural History Department of Ferdinandeum in Hall in Tirol. The collection data are currently being digitized, to facilitate future access to the collection for scientific purposes. These datasets are going to be published in several consecutive parts. After publication of part I (Leptopodomorpha) and part II (Nepomorpha), part III on the cimicomorphan family Reduviidae is presented here. This dataset comprises 1,862 specimens assigned to 11 subfamilies, 56 genera and 139 species. Here, a total of 1,013 datasets are documented, including one holotype (*Reduvius nigrinus* MOULET, 2020) and two paratypes (*Gallobelgicus heissi* RÉDEI & TSAI, 2009).

**Keywords:** Heteroptera, Cimicomorpha, Reduviidae, collection Ernst Heiss, Tiroler Landesmuseum, faunistics

**Citation:** HEISS E., ECKELT A., LEDERWASCH M. & UNTERASINGER R. 2022: The Heteroptera Collection Ernst Heiss at the Tiroler Landesmuseum Ferdinandeum. Part III: Cimicomorpha: Family Reduviidae. – Entomologica Austriaca 29: 39–85.

### Introduction

The bug family Reduviidae LATREILLE, 1807, is the second-largest within Heteroptera and one of the morphologically and ecologically most diverse groups. Reduviidae are mainly predators of other insects and arthropods. The family has a worldwide distribution and is mainly found in tropic and subtropic habitats. Reduviidae, also known as assassin bugs, comprise 13 subfamilies, 102 genera, and 1,668 species and subspecies in the Palaearctic region (PUTSHKOV & PUTSHKOV, 1996). Eleven subfamilies, 56 genera, and 139 species and subspecies are deposited in the collection of the Tiroler Landesmuseum. The major part of these (currently being digitalized) specimens was collected and systematised by Ernst Heiss over a period of about 60 years. In order to make both collection data and the material accessible for future scientific purposes, detailed catalogues are going to be published in consecutive parts. Part I (Leptopodomorpha) and Part II (Nepomorpha) are already published (HEISS et.al. 2021a, 2021b).

Here, collection data of Reduviidae are presented in geographical alphabetical order within the subfamilies and comprise country, province (when available), number of specimens, date, and collector. Countries are abbreviated according to the international standard ISO 3166-6 on country codes. In addition, pictures of 24 specimens of 21 genera classified in ten subfamilies are presented.

Systematics follows PUTSHKOV & PUTSHKOV (1996) in: AUKEMA & RIEGER (edt.) „Catalogue of the Heteroptera of the Palaearctic Region“ (CPH) Vol. 2, AUKEMA, RIEGER & RABITSCH (edt.) CPH Vol. 6 (2013) and PUTSHKOV & MOULET (2009). Taxa included in the collection but not covered by CPH Vol. 2 or 6 were identified by specialists (e.g., RÉDEI D.) and are marked as “exld” (extra limital distribution), their systematics following MALDONADO CAPRILES (1990). Several thousand unidentified Reduviidae from the Oriental region still need to be studied before they can be incorporated into the collection.

Abbreviations for frequently cited collectors:

HA HERNEGGER ALOIS

HE HEISS ERNST

KM KAHLEN MANFRED

KH KIPPENBERG HORST

KA KOFLER ALOIS

LM LEDERWASCH MANFRED

PE PECHLANER ERNST

## Collection data of Reduviidae

### Subfamily Ectotrichodiinae AMYOT & SERVILLE, 1843

#### Genus *Adrania* STÅL, 1863

*Adrania macra* STÅL, 1863 exld

IDN Indonesia, Moluccas, Seram/ Wahai/ 12 km SE, 2 Ex 17.I.1997 leg. Horak J.

#### Genus *Gardena* DOHRN, 1860

*Gardena insignis* HORVÁTH, 1887

ITA Italy, Brescia, Gargnano, 7 Ex 4.VIII.1976 leg. HE, 1 Ex 15.IX.2000 leg. HE

#### Genus *Stenolemus* SIGNORET, 1858

*Stenolemus alikakay* RÉDEI & TSAI, 2010

TWN Taiwan, Taiwan, Fenchihu, 1 Ex 25.V.1977 leg. Klapperich J., 1 Ex 13.VI.1977 leg. Klapperich J.

*Stenolemus bogdanovii* OSHANIN, 1871

AFG Afghanistan, Kabul, Paghman, 1 Ex 20.VII.1962 leg. Vartian E.

PAK Pakistan, Khyber Pakhtunkhwa, Swat/ Madyan, 2 Ex 19.VI.1971 leg. Holzschuh, C.

*Stenolemus novaki* HORVÁTH, 1888

BGR Bulgaria, Oblast Plovdiv, Plovdiv/ Asenova Krepost, 1 Ex 4.VI.1989 leg. Josifov M.

SAU Saudi Arabia, Asch-Scharqiyya, Al Chubar (Khobar), 1 Ex 4.IX.1982 leg. HE

TUR Turkey, Antalya, Alanya, 1 Ex 28.V.1968 leg. Holzschuh C.

**Genus *Ploiaria* SCOPOLI, 1786**

*Ploiaria chilensis* (PHILIPPI, 1862)

PRT Portugal, Madeira, Serra de Agua, 1 Ex 28.IX.1993 leg. Erber W.

PRT Portugal, Madeira, Porto Santo Island/ Pico Castelo, 1 Ex 11.IX.1998 leg. Schuh R.

*Ploiaria domestica* SCOPOLI, 1786

GRC Greece, Peloponnes, Kendro Kandos gorge, 1 Ex 24.IX.1992 leg. Knoflach B.

HRV Croatia, Zadar, Paklenica NP, 1 Ex 8.VI.2014 leg. Eckelt A.

ITA Italy, Trentino-Südtirol, Castelfeder, 1 Ex 12.IV.1955 leg. HA, 1 Ex 1.V.1955 leg. Wohlmann R.

ITA Italy, Südtirol, Montan, 14 Ex 1.IV.1955 leg. Wohlmann R.

**Genus *Tinna* DOHRN, 1859**

*Tinna cf. grassator* (PUTON, 1874)

TUN Tunisia, Medenine, Djerba, 1 Ex 20.VI.1983 leg. HE

*Tinna zonata* MILLER, 1954

SAU Saudi Arabia, Asir, Asir NP/env. Abha, 2 Ex 7.VI.1982 leg. HE

**Genus *Ischnonyctes* STÅL, 1874**

*Ischnonyctes barbarus* (LUCAS, 1849)

ITA Italy, Latium, Rom W/ Palidoro, 3 Ex 27.VII.1969 leg. HE, 1 Ex 1.VIII.1969 leg. HE

ITA Italy, Sardinia, Santa Margherita di Pula, 5 Ex 20.VI.1987 leg. HE

ITA Italy, Sardinia, Sassari, 1 Ex 1.X.1961, unknown collector

**Genus *Metapterus* A. COSTA, 1862**

*Metapterus linearis* A. COSTA, 1862

AUT Austria, Burgenland, Illmitz W/ Biologische Station, 1 Ex 1.I.1988 leg. Heibel H.

AUT Austria, Burgenland, Illmitz, 1 Ex 20.IX.1965 leg. HA

FRA France, Occitanie, Canet-Plage, 4 Ex 10.VI.1953 leg. Weber H.

FRA France, Occitanie, NSG Mas Larrieu, 1 Ex 24.IX.1951 leg. Weber H.

**Genus *Schidium* BERGROTH, 1816**

*Schidium confine* WYGODZINSKY, 1966

TWN Taiwan, Taiwan, Fenchihu, 1 Ex 3.VI.1977 leg. Klapperich J.

**Genus *Empicoris* WOLFF, 1811***Empicoris baerensprungi* (DOHRN, 1862)

AUT Austria, Nordtirol, Fritzens, 1 Ex 7.V.1961 leg. HA

AUT Austria, Lower Austria, Purgstall an der Erlauf, 1 Ex 31.V.1986 leg. Scholz R.

DEU Germany, Bavaria, Brünsee, 1 Ex 13.VII.1998 leg. Schuster G.

NLD The Netherlands, Utrecht, Grebbeberg, 3 Ex 30.V.1990 leg. Aukema B.

*Empicoris brevispinus* (PUTON, 1889)

ESP Spain, Balearic Islands, Santa Ponsa, 1 Ex 1.VII.1990 leg. HE

*Empicoris culiciformis* (DE GEER, 1773)

AUT Austria, Lower Austria, Koppendorf, 1 Ex 26.X.1969 leg. Ressler F.

AUT Austria, Lower Austria, Purgstall an der Erlauf, 1 Ex 17.IX.1986 leg. Ressler F.

AUT Austria, Lower Austria, Scheibbs, 1 Ex 5.XII.1980 leg. Ressler F., 1 Ex 3.X.1983 leg. Rausch H.

AUT Austria, Lower Austria, Zehnbach/ Steinfeldberg, 2 Ex 29.V.1973 leg. Ressler F.

AUT Austria, Nordtirol, Innsbruck/ Amraser Au, 17 Ex 1.IX.1951 leg. PE, 5 Ex 2.IX.1951 leg. PE

AUT Austria, Nordtirol, Innsbruck/ Hötting, 1 Ex 25.VIII.1947 leg. PE

AUT Austria, Nordtirol, Innsbruck/ Mühlau, 1 Ex 14.VI.1989 leg. HE

AUT Austria, Nordtirol, Innsbruck/ city, 1 Ex 1.X.1962 leg. HA, 1 Ex 25.IX.1965 leg. HE, 1 Ex 25.VI.1967 leg. HE, 3 Ex 1.X.1969 leg. HE

AUT Austria, Nordtirol, Innsbruck/ University, 1 Ex 8.VIII.1957 leg. PE

AUT Austria, Nordtirol, Hall in Tirol (SFZ), 1 Ex 27.VIII.2018 leg. Wiesmair B.

AUT Austria, Nordtirol, Schwaz, 1 Ex 27.IV.1966 leg. HE

AUT Austria, Nordtirol, Tannheim, 1 Ex leg. Rief O.

AUT Austria, Upper Austria, Linz: Dornach, 1 Ex 26.X.1993 leg. Speta F.

AUT Austria, Osttirol, Lienz/ Bundeskonvikt, 1 Ex 6.VII.1959 leg. KA

AUT Austria, Osttirol, Lienz/ cemetery, 1 Ex 18.III.2001 leg. KA

AUT Austria, Osttirol, Lienz/ Meranerstraße 3, 1 Ex 18.IV.1962 leg. KA, 1 Ex 14.VI.1962 leg. KA, 1 Ex 13.VII.1967 leg. KA

AUT Austria, Osttirol, Lienz/ St. Andrä, 1 Ex 27.VIII.2008 leg. KA

AUT Austria, Osttirol, Lienz/linker Drauweg, 1 Ex 22.VIII.2008 leg. KA

AUT Austria, Vorarlberg, Feldkirch, 2 Ex 13.XII.1931 leg. Moosbrugger

AUT Austria, Vienna, Vienna-Schönbrunn, 1 Ex 18.VIII.1969 leg. Holzschuh C.

DEU Germany, Baden-Württemberg, Hirschberg/ Leutershausen, 1 Ex 1.V.2006 leg. Wunderlich J.

DEU Germany, Bavaria, Schöneberg, 1 Ex 16.VII.2003 leg. Schuster G.

- GRC Greece, Thessaly, Chania, 1 Ex 24.IV.1983 leg. HE  
 ITA Italy, Latium, Ladispoli, 3 Ex 1.VIII.1966 leg. HE  
 ITA Italy, Latium, Rom W/ Palidoro, 1 Ex 1.VIII.1964 leg. HE, 2 Ex 9.VIII.1965 leg. HE, 4 Ex 20.VIII.1963 leg. HE  
 ITA Italy, Sardinia, Santa Margherita di Pula, 2 Ex 20.VI.1987 leg. HE  
 ITA Italy, Südtirol, Montan, 1 Ex 28.VII.1954 leg. Wohlmann R., 1 Ex 1.IV.1955 leg. Wohlmann R., 2 Ex 15.IX.1954 leg. Wohlmann R., 1 Ex 15.X.1954 leg. Wohlmann R.  
 ITA Italy, Trentino-Südtirol, Castelfeder, 5 Ex 26.IX.1954 leg. HA

*Empicoris mediterraneus* HOBERLANDT, 1956

- ESP Spain, Balearic Islands, Santa Ponsa, 1 Ex 1.VII.1990 leg. HE, 1 Ex 5.VII.1990 leg. HE  
 ITA Italy, Latium, Rom W/ Palidoro, 2 Ex 9.VIII.1965 leg. HE

*Empicoris rubromaculatus* (BLACKBURN, 1889)

- ESP Spain, Balearic Islands, Santa Ponsa, 1 Ex 5.VII.1990 leg. HE  
 ESP Spain, Balearic Islands, Punta Negra, 1 Ex 1.VII.1990 leg. HE  
 PRT Portugal, Azores, Ribeira Grande/ Lagoa do Fogo, 3 Ex 22.IX.1998 leg. HE  
 PRT Portugal, Madeira, Camara de Lobos/ Jardim da Serra, 6 Ex 4.X.1993 leg. HE, 5 Ex 4.X.2006 leg. HE  
 PRT Portugal, Madeira, Serra de Agua, 1 Ex 28.IX.1993 leg. Erber W.

*Empicoris vagabundus* (LINNAEUS, 1758)

- AUT Austria, Styria, Bärndorf/ Rottenmann E, 1 Ex leg. Moosbrugger  
 DEU Germany, Bavaria, Forsthofer, 2 Ex 16.VII.2007 leg. Schuster G.  
 ITA Italy, Latium, Rom W/ Palidoro, 1 Ex 1.VIII.1964 leg. HE, 1 Ex 9.VIII.1965 leg. HE

**Subfamily Holoptiliinae AMYOT & SERVILLE, 1843**

**Genus *Ptilocnemus* WESTWOOD, 1840**

*Ptilocnemus femoralis* HORVÁTH, 1902 exld

- AUS Australia, Queensland, Brisbane, 2 Ex 7.XI.1989 leg. HE  
 AUS Australia, Queensland, Gympie/ Brooyar State Forest, 1 Ex 12.III.1997 leg. Wachtel F.

**Subfamily Elasmodeminae LETHIERRY & SEVERIN, 1860**

**Genus *Elasmodema* STÅL, 1860**

*Elasmodema erichsoni* STÅL, 1860 exld

- ARG Argentina, Misiones, Misiones/ Loreto, 1 Ex 20.X.1950 leg. Kormilev N.

**Subfamily Peiratinae AMYOT & SERVILLE, 1843****Genus *Ectomocoris* MAYR, 1865***Ectomocoris chiragra* (FABRICIUS, 1803)

ESP Spain, Gran Canaria, Agaete, 1 Ex 7.XII.1997 leg. Grimm R.

*Ectomocoris ululans* (ROSSI, 1790)

IRN Iran, Khorasan, Golestan/ Dasht, 4 Ex 19.VI.2007 leg. Wieser Ch.

IRN Iran, Mazandaran, Miankaleh Wildlife Sanctuary and Wetland, 1 Ex 12.V.2001 leg. HE

**Genus *Peirates* SERVILLE, 1831***Peirates hybridus* (SCOPOLI, 1763)

AUT Austria, Burgenland, Güssing W/ Steingraben, 1 Ex 15.V.1966 leg. HA

AUT Austria, Carinthia, Pischelsdorf, 1 Ex leg. Moosbrugger

AUT Austria, Upper Austria, Plesching/ Austernbank, 1 Ex 6.V.1951 leg. Schwarz M.

HRV Croatia, Zadar, Pag/ Velo Blato, 1 Ex 21.V.2014 leg. LM

ITA Italy, Genova, Cavi di Lavagna, 2 Ex 25.V.1977 leg. HA

ITA Italy, Latium, Rom W/ Palidoro, 4 Ex 20.VIII.1963 leg. HE, 1 Ex 9.VIII.1965 leg. HE

ITA Italy, Südtirol, Brixen, 1 Ex 15.VIII.1951 leg. Kofler F.J., 1 Ex 14.V.1952 leg. Kofler F.J., 1 Ex 17.VI.1952 leg. Kofler F.J.

ITA Italy, Südtirol, Brixen/ Pallaus, 1 Ex 20.IX.1963 leg. Peez A.

ITA Italy, Südtirol, Brixen/ Tschötscher Heide, 2 Ex 21.IV.1962 leg. Peez A., 1 Ex 27.III.1967 leg. Peez A.

ITA Italy, Südtirol, Brixen: Seeburg, 1 Ex 8.V.1952 leg. Kofler F.J.

ITA Italy, Südtirol, Feldthurns: Schloss Velthurns, 1 Ex 5.V.1952 leg. Kofler F.J.

ITA Italy, Südtirol, Montan, 1 Ex 1.VII.1955 leg. Wohlmann R.

ITA Italy, Südtirol, env. Meran/ Schlanders, 1 Ex 2.III.1945 leg. PE

ITA Italy, Tuscany, Cecina Marina, 1 Ex 1.IX.1956 leg. Wohlmann R.

ITA Italy, Trentino, Cima Pari, 4 Ex 30.VIII.1962 leg. Burmann K.

ITA Italy, Trentino-Südtirol, Castelfeder, 1 Ex 11.IV.1955 leg. HA

MNE Montenegro, Opstina Podgorica, Skadarsko Jezero/ Vranjina E, 1 Ex 3.VI.2014 leg. Eckelt A.

TUR Turkey, Kirklareli, Demirköy Pass, 1 Ex 2.V.1973 leg. Heinz

*Peirates strepitans* RAMBUR, 1839

TUN Tunisia, Jendouba, Tabarka, 5 Ex 10.VII.1997 leg. Wimmer J.

*Peirates stridulus* (FABRICIUS, 1787)

FRA France, Provence-Alpes-Cote d'Azur, St. Maximin-la-Sainte Baume, 1 Ex 22.IV.1981  
leg. Günther H.

TUN Tunisia, Jendouba, Firnanah, 1 Ex 10.IV.1981 leg. Gusenleitner J.

**Genus *Sirthenea* SPINOLA, 1837**

*Sirthenea dimidiata* HORVÁTH, 1911

TWN Taiwan, Taiwan, Fenchihu, 1 Ex 14.V.1977 leg. Klapperich J., 7 Ex 20.V.1977 leg.  
Klapperich J., 3 Ex 25.V.1977 leg. Klapperich J., 1 Ex 13.VI.1977 leg. Klapperich J.

*Sirthenea flavipes* (STÅL, 1855) exld

CHN China, Hubei, Hubei/ Dabie Shan, 1 Ex 17.VI.2003 leg. Turna J.

**Genus *Rasahus* AMYOT & SERVILLE, 1843**

*Rasahus hamatus* (FABRICIUS, 1781) exld

ECU Ecuador, Galápagos, Santa Cruz/ Puerto Ayora, 2 Ex 1.II.1987 leg. HE

**Subfamily Phymatinae LAPORTE, 1832**

**Genus *Amblythyreus* WESTWOOD, 1842**

*Amblythyreus stalii* HANDLIRSCH, 1897 exld

MEX Mexico, Jalisco, Guadalajara/ 40 miles W, 1 Ex 18.VI.1963 leg. Scullen & Bolinger

MEX Mexico, Morelos, Morelos/ Ciudad Ayala, 1 Ex 5.VI.1971 leg. Penez H.

**Genus *Lophoscutus* KORMILEV, 1951**

*Lophoscutus lepidus* (STÅL, 1862) exld

MEX Mexico, Mut., Tuxtuk. 1 Ex 18.XI.1976 leg. Martinez A.

*Lophoscutus prehelensis* (FABRICIUS, 1803) exld

USA United States of America, Kansas, Jefferson/ Lawrence, 1 Ex 6.VII.1971 leg. Oman

**Genus *Carcinocoris* HANDLIRSCH 1897**

*Carcinocoris binghami* (SHARP, 1897)

CHN China, Yunnan, Weibaoshan, 2 Ex 1.VII.1993 leg. Holzschuh C.

**Genus *Chelocoris* BIANCHI, 1899**

*Chelocoris yunnanus* HSIAO & LIU, 1979

CHN China, Yunnan, Weibaoshan, 3 Ex 1.VII.1993 leg. Holzschuh C.

**Genus *Phymata* LATREILLE, 1802**

*Phymata crassipes* (FABRICIUS, 1775)

AUT Austria, Burgenland, Breitenbrunn/ Thenauriegel, 5 Ex 26.V.2012 leg. LM

AUT Austria, Burgenland, Jois, 1 Ex 24.V.1968 leg. HA, 2 Ex 25.V.1968 leg. HA

- AUT Austria, Burgenland, Neckenmarkt, 1 Ex 22.VI.2002 leg. HE
- AUT Austria, Burgenland, Neusiedlersee, 3 Ex 1.VII.1965 leg. Weber H.
- AUT Austria, Burgenland, Oslip SE/ Silberberg, 1 Ex 18.V.2013 leg. LM
- AUT Austria, Burgenland, Redlschlag/ Wenzelanger, 2 Ex 7.VI.2015 leg. LM
- AUT Austria, Burgenland, Siegendorfer Puszta, 2 Ex 24.V.2008 leg. HE
- AUT Austria, Burgenland, Winden am See, 2 Ex 10.VI.1970 leg. HA, 2 Ex 10.VII.1979 leg. HA
- AUT Austria, Burgenland, Winden E/ NSG Hackelsberg, 2 Ex 24.V.1967 leg. HA
- AUT Austria, Carinthia, Sablatnigmoor, 3 Ex 20.VII.1989 leg. Kofler A. & Mildner
- AUT Austria, Lower Austria, Bad Deutsch Altenburg, 1 Ex 18.IX.1940 leg. Bluehweiss
- AUT Austria, Lower Austria, Hainburger Berge, 1 Ex 11.VII.1961 leg. Weber H., 1 Ex 14.VII.1961 leg. Weber H.
- AUT Austria, Lower Austria, Hochrieß/ Heide, 1 Ex 9.VII.1971 leg. Ressler F., 1 Ex 28.VI.1973 leg. Rausch H.
- AUT Austria, Lower Austria, Kienberg b. Gaming, 1 Ex 21.V.1972 leg. Rausch H., 1 Ex 9.VI.1978 leg. Ressler F.
- AUT Austria, Lower Austria, Lunz am See, 2 Ex 15.VII.1984 leg. Ressler F., 2 Ex 1.VI.1996 leg. Ressler F.
- AUT Austria, Lower Austria, Oberweiden, 1 Ex 12.VII.1941 leg. Bluehweiss
- AUT Austria, Lower Austria, Schauboden, 1 Ex 10.VII.1973 leg. Ressler F.
- AUT Austria, Lower Austria, Schauboden, 1 Ex 16.VI.1970 leg. Ressler F., 1 Ex 13.X.1971 leg. Ressler F., 1 Ex 31.VIII.1983 leg. Ressler F., 1 Ex 3.VI.1984 leg. Ressler F., 1 Ex 24.VIII.1985 leg. Ressler F., 1 Ex 7.VII.1989 leg. Ressler F.
- AUT Austria, Lower Austria, St. Anton an der Jeßnitz, 1 Ex 2.VI.1984 leg. Ressler F.
- AUT Austria, Lower Austria, env. Lunz am See/ Kothbergtal, 1 Ex 26.V.1985 leg. Ressler F.
- AUT Austria, Nordtirol, Brentach/ Reutte NE, 1 Ex 6.VII.1915 leg. Knabl H.
- AUT Austria, Nordtirol, Elmen, 1 Ex 1.I.1942 leg. Lechleitner
- AUT Austria, Nordtirol, Forchach, 2 Ex 15.V.1945 leg. Kofler F.J.
- AUT Austria, Nordtirol, Forchach/ Bannwald, 1 Ex 17.V.1945 leg. Kofler F.J., 1 Ex 19.V.1945 leg. Kofler F.J.
- AUT Austria, Nordtirol, Forchach/ Feld, 1 Ex 6.VI.1945 leg. Kofler F.J.
- AUT Austria, Nordtirol, Kaisertal - Kufstein NE, 1 Ex 10.VI.2006 leg. HE
- AUT Austria, Nordtirol, Scharnitz, 1 Ex 14.VI.1944 leg. Ratter J., 1 Ex 13.VI.1954 leg. Wohlmann R., 1 Ex 4.VII.1954 leg. Ratter J., 1 Ex 5.VII.1954 leg. HA, 6 Ex 13.VI.1954 leg. Wohlmann R., 4 Ex 18.VI.1961 leg. HA
- AUT Austria, Nordtirol, Vals/ Touristenrast env. (Hinteres Valsertal), 1 Ex 4.VII.2015 leg. Eckelt A.
- AUT Austria, Upper Austria, Bad Ischl/ Jainzen, 1 Ex 20.V.2006 leg. Pöhl N.



- AUT Austria, Upper Austria, Bodenwies, 3 Ex 2.VI.1994 leg. Ebmer A.W.
- AUT Austria, Salzburg, Ebenau/ Salzburg E, 1 Ex 1.VI.1978 leg. Gusenleitner J.
- BGR Bulgaria, Goldstrand (Zlatni pjasaci) - Kranevo, 1 Ex 1.VI.1975 leg. Siess W.
- BGR Bulgaria, Oblast Plovdiv, Plovdiv/ Asenova Krepost, 2 Ex 5.VI.1989 leg. HE
- BGR Bulgaria, Primorsko, Burgas, 1 Ex 13.VI.1997 leg. Simandl J.
- DEU Germany, Bavaria, Karlstadt am Main, 1 Ex 23.V.1971 leg. Mühle H.
- DEU Germany, Bavaria, Siferlinger See, 1 Ex 1.VI.2008 leg. LM
- DEU Germany, Bavaria, Sylvensteinsee, 1 Ex 10.VI.1982 leg. Wolf I.
- DEU Germany, Bavaria, Vorderriß, 1 Ex 24.V.1992 leg. Wolf I.
- DEU Germany, Thüringen, Wachsenburg, 1 Ex 23.V.1986 leg. Kippenberg H.
- ESP Spain, Andalusia, Ruta del Veleta, 1 Ex 1.I.1977 leg. Rausch H.
- FRA France, Languedoc-Roussillon, Cirque de Navacelles/ La Baume Auriol, 1 Ex 25.VI.2013 leg. LM
- FRA France, Occitanie, Cordes-sur-Ciel/ env., 1 Ex 3.VII.2014 leg. LM
- FRA France, Provence-Alpes-Cote d'Azur, Cassis, 1 Ex 18.VI.2013 leg. LM
- FRA France, Provence-Alpes-Cote d'Azur, Digne env., 2 Ex 7.VI.1979 leg. HE
- FRA France, Provence-Alpes-Cote d'Azur, La Besee, 1 Ex 26.VII.1957 leg. Burmann K.
- FRA France, Provence-Alpes-Côte d'Azur, Sainte Baume/ Plan de Aups, 1 Ex 6.VII.2015 leg. LM
- FRA France, Provence-Alpes-Cote d'Azur, Toulon env., 3 Ex 1.VII.1970 leg. Frieser R.
- GRC Greece, Kallithea-Sapka, 2 Ex 9.VI.1973 leg. Aspöck C. & H. & U. & Rausch H. & R. & Ressler P.
- HRV Croatia, Dubrovnik-Neretva, Lokrum, 1 Ex 16.VIII.1966 leg. Eitschberger U.
- HRV Croatia, Istria, Marusici, 2 Ex 24.VI.1981 leg. Puthz V.
- HRV Croatia, Istria, Pazin W: Tinjan, 2 Ex 22.VIII.1982 leg. KA
- HRV Croatia, Karlobag E/ pass, Lika-Senj, 1 Ex 22.V.2014 leg. LM
- HRV Croatia, Primorje-Gorski kotar, Opatija SW: Ucka, pass - summit, 1 Ex 28.VI.2012 leg. Wolf I.
- HUN Hungary, Pest, Budai Mountains, 2 Ex 20.VIII.1983 leg. HE
- HUN Hungary, Wesprim, Vezprem/ Liter, 1 Ex 22.V.2014 leg. Mühle H., 5 Ex 12.V.2015 leg. Mühle H.
- ITA Italy, Brescia, Gargnano, 1 Ex 1.VIII.1974 leg. HE
- ITA Italy, Gorizia, Carso di Doberdò/ Redipuglia E, 1 Ex 30.V.1993 leg. KA
- ITA Italy, Puglia, Carpino, 2 Ex 29.V.1991 leg. Thailandler
- ITA Italy, Südtirol, Bozen, 1 Ex 12.VII.1959 leg. Kapeller R.
- ITA Italy, Südtirol, Bozen/ Glaning St.Martin, 1 Ex 2.V.1982 leg. KM

- ITA Italy, Südtirol, Bozen/ Haselburg, 1 Ex 18.V.1952 leg. Ratter J.  
ITA Italy, Südtirol, Brixen, 1 Ex 8.V.1952 leg. Kofler F.J.  
ITA Italy, Südtirol, Brixen/ right slope of the valley, 1 Ex 10.VII.1955 leg. Peez A.  
ITA Italy, Südtirol, Brixen/ Talhofer, 2 Ex 24.VI.1962 leg. Peez A.  
ITA Italy, Südtirol, Brixen/ Waldheim, 2 Ex 12.VI.1961 leg. Peez A.  
ITA Italy, Südtirol, Girlan, 1 Ex 24.V.1952 leg. Ratter J.  
ITA Italy, Südtirol, Klausen, 1 Ex 21.VI.1954 leg. Kapeller R., 1 Ex 27.VI.1954 leg. Wohlmann R..  
ITA Italy, Südtirol, Leifers, 1 Ex 25.V.1953 leg. Ratter J.  
ITA Italy, Südtirol, Marklhof/ Girlan E, 1 Ex 23.IX.1941 leg. Ratter J.  
ITA Italy, Südtirol, Montan, 2 Ex 1.VI.1955 leg. Wohlmann R., 3 Ex 1.VII.1955 leg. Wohlmann R.  
ITA Italy, Südtirol, Montiggel, 1 Ex 25.IX.1941 leg. Ratter J.  
ITA Italy, Südtirol, Moritzing, 1 Ex 27.V.1928 leg. Ratter J., 1 Ex 19.V.1952 leg. Ratter J., 2 Ex 12.VI.1955 leg. Ratter J.  
ITA Italy, Südtirol, Schabs, 1 Ex 7.V.1954 leg. Kapeller R., 2 Ex 7.V.1959 leg. Kapeller R., 1 Ex 31.VII.1960 leg. HA  
ITA Italy, Südtirol, Schreckbichl, 3 Ex 19.VII.1939 leg. Ratter J., 1 Ex 23.IX.1941 leg. Ratter J.  
ITA Italy, Südtirol, Sigmundskron, 2 Ex 1.VI.1930 leg. Ratter J.  
ITA Italy, Südtirol, St. Pauls/ Eppan, 1 Ex 12.VI.1954 leg. Ratter J.  
ITA Italy, Südtirol, Taufers, 1 Ex 5.VI.1964 leg. HE  
ITA Italy, Südtirol, Vahrn, 1 Ex 22.VI.1957 leg. HA  
ITA Italy, Trentino, Loppio See, 1 Ex 22.VII.1953 leg. HA  
ITA Italy, Trentino, Mori NE: Ravazzone, 5 Ex 26.VII.1960 leg. HA  
ITA Italy, Trentino, Pomarolo, 1 Ex 10.VI.1992 leg. HE, 1 Ex 19.VII.1995 leg. HE  
ITA Italy, Trentino, Rovereto, 2 Ex 16.VIII.1953 leg. HA  
ITA Italy, Trentino-Südtirol, Castelfeder, 1 Ex 1.VIII.1957 leg. HA  
ITA Italy, Venice, Lazise, 3 Ex 20.IV.1971 leg. Kippenberg H.  
ITA Italy, Venice, Peri, 1 Ex 29.IV.1993 leg. Wolf I.  
ITA Italy, Verona, Garda, 4 Ex 25.V.1970 leg. HE  
MKD Macedonia, Titov Veles, 1 Ex 1.VI.1986 leg. Wolf I.,  
SVN Slovenia, Sezana, 3 Ex 27.VI.1981 leg. Puthz V.  
SVN Slovenia, Slovenia, Nanos, 2 Ex 23.V.1989 leg. Deutsch H., 1 Ex 28.V.1998 leg. Deutsch H.  
SVN Slovenia, Slovenia, Orlek/ Trieste NE, 1 Ex 29.V.1993 leg. KA

*Phymata monstrosa* (FABRICIUS, 1794)

ESP Spain, Andalusia , Puerto del Leon, 1 Ex 29.V.1971 leg. Aspöck H. & U., Rausch H.& Hüttinger E.

ESP Spain, Andalusia , Sierra Magina de la Cruz, 1 Ex 1.VI.1971 leg. Aspöck H. & U., Rausch H.& Hüttinger E.

PRT Portugal, Setúbal, Sesimbra, 1 Ex 8.V.1989 leg. Braun

*Phymata americana* MELIN, 1830 exld

USA United States of America, Oregon, Oregon/ Harney County, 1 Ex 18.VII.1957 leg. Lattin J., 1 Ex 20.VIII.1958 leg. Beer F.

*Phymata americana coloradensis* MELIN, 1930 exld

USA United States of America, Oregon, Klamath Falls, 1 Ex 17.IX.1953 leg. Stephen W.P.

USA United States of America, Oregon, Ashland, 1 Ex 17.IX.1953 leg. Stephen W.P.

*Phymata armata* HANDLIRSCH, 1897 exld

BRA Brasilia, Vacaria, Rio Grande do Sul, 1 Ex 1.IV.1967 leg. Plaumann

*Phymata barberi* KORMILEV, 1962 exld

MEX Mexico, Veracruz, Veracruz, 1 Ex 7.XI.1975 leg. Brailovsky H.

*Phymata fasciata* GRAY, 1832 exld*Phymata fasciata mexicanus* MELIN, 1930

GTM Guatemala, Chimaltenango, Tecpan, 1 Ex 17.VIII.1971 leg. Brailovsky H.

MEX Mexico, Chiapas, Chiapas/ Comitán, 2 Ex 4.XII.1941

MEX Mexico, Veracruz, Zongolica, 1 Ex 30.VI.1967 leg. Rivera

*Phymata fasciata panamensis* KORMILEV, 1962 exld

MEX Mexico, Jalisco, Cihuatlan, 1 Ex 5.XII.1976 leg. Brailovsky H.

MEX Mexico, Morelos, Morelos/ Xochicalco, 1 Ex 25.II.1977 leg. Barrera E.

*Phymata granulosa* HANDLIRSCH, 1897 exld

MEX Mexico, Oaxaca, Oaxaca/ Tuxtepec, 2 Ex 28.I.1976 leg. Brailovsky H.

*Phymata venezuelana* KORMILEV, 1950 exld

MEX Mexico, Veracruz, Las Choapas, 1 Ex 7.X.1976 leg. Brailovsky H.

**Subfamily Reduviinae LATREILLE, 1807****Genus *Acanthaspis* AMYOT & SERVILLE, 1843***Acanthaspis fuscineris* HSIAO, 1976

THA Thailand, Mae Hong Son, Soppong/ Mae La Na /W, 1 Ex 15.IV.2000 leg. Rausch H. & R., 2 Ex 23.IV.2000 leg. Rausch H. & R.

*Acanthaspis picta* HSIAO, 1976

THA Thailand, Mae Hong Son, Soppong/ Mae La Na/ NW, 1 Ex 15.IV.2000 leg. Rausch H. & R.

*Acanthaspis flavovaria* (HAHN, 1834) exld

MYS Malaysia, Kelantan, Kelantan/ between Kampong Raja and Gua Musang, 1 Ex 1.IV.2006 leg. Cechovsky P.

*Acanthaspis gulo* STÅL, 1863 exld

THA Thailand, Chumphon, Chumphon/ Amphoe Phato, 1 Ex 14.III.1996 leg. Prudek P.

### **Genus *Brachytonus* CHINA, 1925**

*Brachytonus nigripes* HSIAO, 1976

VNM Vietnam, Lang Son, Lang Son/ 52 km SW, 2 Ex 27.IV.1996 leg. Pacholatko & Dembicky

### **Genus *Holotrichius* BURMEISTER, 1835**

*Holotrichius bergrothi* REUTER, 1891

IRN Iran, Khorasan, Golestan NP, Almeh valley, 1 Ex 22.V.2001 leg. HE

IRN Iran, Khorasan, Golestan/ Dasht, 1 Ex 20.V.2001 leg. HE

*Holotrichius denudatus* A. COSTA, 1843

HRV Croatia, Istria, Plomin, 1 Ex 20.VI.1965 leg. Wellschmied

HRV Croatia, Zadar, Pag/ Dubrava Hanzina, 1 Ex 22.V.2014 leg. LM

ITA Italy, Apulia, Gargano, 2 Ex 20.VII.1992 leg. Lubi R.

ITA Italy, Calabria, Aspromonte/ Sella Entrata, 1 Ex 8.VII.1979 leg. Rausch H.

ITA Italy, Campania, Sassinoro, 1 Ex 1.VI.1962 leg. Matese

ITA Italy, Venice, Carmelo, 1 Ex 15.VI.1963 leg. Pfister H.

*Holotrichius reuterianus* DISPONS, 1961

DZA Algeria, Saakane Dschebel Tellertheba, 1 Ex 13.III.1981 leg. Mayer

*Holotrichius rotundatus* STÅL, 1874

IRN Iran, Lorestan, 1 Khorramabad, 20 km E, Ex 1.V.1974 leg. Holzschuh, C.

TUR Turkey, Hakkâri, Sat-Dag/ Oramar valley, 1 Ex 24.VII.1975 leg. Heinz

*Holotrichius tenebrosus* BURMEISTER, 1835

GRC Greece, Decentralized Administration of the Aegean, Drymalia/ Bay of Kalados, 1 Ex 28.V.2012 leg. Rausch H. & R., 1 Ex 31.V.2012 leg. Rausch H. & R.

GRC Greece, Fthiotis, Parnass, 1 Ex 24.V.1987 leg. Freude H.

GRC Greece, Laconia, Monemvasia, 5 km S, 1 Ex 3.V.1984 leg. Freude H.

GRC Greece, Larisa, Mount Ossa/ Stomion, 4 Ex 22.V.1988 leg. Wolf I.

- GRC Greece, Peloponnes, Achaia Kalavrita, 1 Ex 8.VI.2008 leg. Egger M.  
 GRC Greece, Peloponnes, Mani/ Kastania, 1 Ex 26.IX.1993 leg. Knoflach B.  
 GRC Greece, Peloponnes, Parnon Mountains/ Mazia creek, 1 Ex 15.VI.2006 leg. Rausch H. & R.  
 GRC Greece, Peloponnes, Taygetos/ Arachova, 1 Ex 23.VI.2006 leg. Rausch H. & R.  
 GRC Greece, Penteoria/ Lidoriki Mountains, 1 Ex 31.V.2009 leg. Rausch H. & R.  
 GRC Greece, Thessaly and Central Greece, Desfina/ Street to Itea, 1 Ex 3.VI.2012 leg. Rausch H. & R.

**Genus *Pasira* STÅL, 1859**

*Pasira basiptera* STÅL, 1859

- IRN Iran, Mazandaran, Mazanderan/ Miankaleh Wildlife Sanctuary and Wetland, 2 Ex 12.V.2001 leg. HE  
 ITA Italy, Tuscany, Rignano, 2 Ex 29.IX.1973 leg. Magini

**Genus *Reduvius* FABRICIUS, 1775**

*Reduvius bidens* LINNAUORI, 1964

- OMN Oman, Dzhopar Prov., Nashib env., 1 Ex. 25.X.2003 leg. Jakl. S.

*Reduvius cf elegans* (JAKOVLEV, 1885)

- TKM Turkmenistan, Kushka Distr., Morgunovca, 3 Ex 5.V.1985 leg. Putschkov S.

*Reduvius disciger* HORVATH, 1896

- IRN N Iran, Golestan Prov., Jahan Nama, Deras Nu, 1 Ex. 14.VI.2007 leg. HE

*Reduvius fasciatus fasciatus* REUTER, 1887

- CHN China, Hebei, Qinglong, 1 Ex 17.VI.2001 leg. Turna J.  
 CHN China, Beijing, Badaling, 3 Ex 28.V.2000 leg. Turna J.  
 CHN China, Beijing, Yunmeng Shan NP, 1 Ex 4.VI.2000 leg. Turna J.

*Reduvius fasciatus lui* (CAI & SHEN), 1997

- CHN China, Yunnan, Deqen, 1 Ex 23.VI.1997 leg. Turna J.  
 CHN China, Yunnan, Deqen-Yanjing, 1 Ex 21.VI.1997 leg. Turna J.

*Reduvius froeschneri* CAI & SHEN, 1997

- CHN China, Hebei, Fengning, 1 Ex 3.VI.2000 leg. Turna J.  
 CHN China, Hubei, Dabie Shan/ Wujiashan Forest NP, 1 Ex 22.V.2005 leg. Turna J.  
 CHN China, Qingling/ Taibai Shan Mountains, 1 Ex 1.I.2000 leg. Plutenko A.  
 CHN China, Shangxi, Chao Shan, 1 Ex 4.VII.2001 leg. Turna J.

*Reduvius insularis* LINNAUORI, 1964

- OMN Oman, Dzhopar Prov., Nashib env., 1 Ex. 25.X.2003 leg. Jakl J.

TUR Turkey, Nemrut, 2 Ex. 4.VII.2009 leg. Jakl J.

*Reduvius komarovii* (JAKOVLEV, 1885)

IRN S Iran, N Bandar Abbas, 1 Ex. 3.IV.1974 leg. Vartian

*Reduvius lateralis* HSIAO, 1976

CHN China, Sichuan, Moxi, 1 Ex 15.VI.2006 leg. Tryzna M.

*Reduvius pallipes* KLUG, 1830

GRC Greece, Crete, Kastellakia, 1 Ex 23.VII.1977 leg. Malicky H.

GRC Greece, Crete, Kastellakia, 2 Ex 17.VII.1977 leg. Malicky H.

IRN S-Iran, Hormozgan Prov., Beshagerd Mts, Angohran, 1 Ex. 25.III.2000 leg. Plutenko A.

IRN Iran, Khorasan, Golestan/ Dasht, 1 Ex 20.V.2001 leg. HE

ISR Israel, Southern District, Ein Gedi, 1 Ex 12.IV.1981 leg. Wewalka G.

TUR Turkey, Istanbul, 1 Ex 1.VI.1970 leg. Ressler F.

TUR Turkey, Mersin, Anamur, 1 Ex 1.VI.1968 leg. Schurmann P.

*Reduvius nigrinus* MOULET, 2020

TUR Turkey, Nemrut, 1 Ex. 4.VII.2009 leg. Louda J. (Holotype)

*Reduvius personatus* (LINNAEUS, 1758)

AUT Austria, Burgenland, Breitenbrunn, 1 Ex 9.VI.2014 leg. LM

AUT Austria, Carinthia, Dietrichstein/ Feldkirchen E, 1 Ex 1.VIII.1974 leg. KA

AUT Austria, Carinthia, Ferlach, 1 Ex 1.VIII.1994 leg. Wieser Ch.

AUT Austria, Carinthia, Magdalensberg/ St. Veit an der Glan SE, 1 Ex 1.VII.1995 leg. Wieser Ch.

AUT Austria, Carinthia, Obermörschach/ Hermagor NW, 5 Ex 1. I. 1987 leg. Wieser Ch., 1 Ex 1.VI.1990 leg. Wieser Ch., 1 Ex 1.VI.1991 leg. Wieser Ch., 3 Ex 1.VII.1991 leg. Wieser Ch., 1 Ex 1.VIII.1991 leg. Wieser Ch., 3 Ex 1.VII.1992 leg. Wieser Ch., 2 Ex 1.VIII.1992 leg. Wieser Ch.

AUT Austria, Carinthia, Rössnig/ Ferlach NW (Reßnig), 1 Ex 1.V.1992 leg. Wieser Ch., 1 Ex 1.VI.1993 leg. Wieser Ch.

AUT Austria, Carinthia, Wölfnitz NW Klagenfurt, 1 Ex 1.VI.1994 leg. Wieser Ch.

AUT Austria, Lower Austria, Purgstall an der Erlauf, 1 Ex 16.VII.1971 leg. Hüttinger E., 1 Ex 21.IX.1985 leg. Ressler F., 1 Ex 22.VIII.1983 leg. Ressler F., 1 Ex 12.VII.1996 leg. Fert E.

AUT Austria, Lower Austria, Wieselburg, 1 Ex 23.V.2002 leg. Buchebner

AUT Austria, Nordtirol, Fernheizwerk-Kufstein, 1 Ex 5.VII.2010 leg. LM

AUT Austria, Nordtirol, Hall in Tirol, 1 Ex 13.VI.1950 leg. Rief O., 1 Ex 1.VI.1966 leg. HE

- AUT Austria, Nordtirol, Hintertux, 1 Ex 22.VI.1950 leg. Kofler F.J.
- AUT Austria, Nordtirol, Innsbruck, 1 Ex 13.VI.1950 leg. Rief O., 1 Ex 25.VII.1980 leg. HA, 1 Ex 16.VIII.1989 leg. Pickl G., 1 Ex 12.VII.1999 leg. Thailandler B.
- AUT Austria, Nordtirol, Innsbruck/ Mentlgasse, 1 Ex 17.VII.1976 leg. Zschästak A.
- AUT Austria, Nordtirol, Innsbruck/ Saggen, 1 Ex 11.VII.1956 leg. Eder
- AUT Austria, Nordtirol, Innsbruck/ city, 1 Ex 27.V.1963 leg. HA
- AUT Austria, Nordtirol, Innsbruck/ Wilten, 1 Ex leg. Zschästak A.
- AUT Austria, Nordtirol, Innsbruck/ Mühlau,
- AUT Austria, Nordtirol, Innsbruck/ Mühlau, 1 Ex 30.VI.1963 leg. PE, 1 Ex 31.V.1999 leg. HE, 1 Ex 17.VII.2005 leg. HE
- AUT Austria, Nordtirol, Kellerjoch/ Schwaz SE, 1 Ex 9.VII.1950 leg. Kofler F.J.
- AUT Austria, Nordtirol, Kranebitter Innau, 1 Ex 29.V.2018 leg. Wiesmair B.
- AUT Austria, Nordtirol, Kufstein/ Stadtgebiet, 1 Ex 13.IX.1970 leg. Zschästak A.
- AUT Austria, Nordtirol, Kufstein/ Wagingerstrasse 4, 1 Ex 12.VII.2013 leg. LM, 1 Ex 29.VII.2018 leg. LM
- AUT Austria, Nordtirol, 1 Ex 23.IV.1972 leg. HE Uc
- AUT Austria, Nordtirol, Ranggen, 1 Ex 9.IX.1979 leg. HA
- AUT Austria, Nordtirol, Pfunds Kobl Sonnenhof, unknown collector and date
- AUT Austria, Nordtirol, Straße Vorder-Hinterkobl, unknown collector and date
- AUT Austria, Osttirol, Dölsach, 1 Ex 4.IV.1997 leg. Ronacher P.
- AUT Austria, Osttirol, Lienz, 1 Ex 18.VI.1960 leg. KA
- AUT Austria, Osttirol, Lienz/ Meranerstraße 3, 1 Ex 18.VIII.1970 leg. KA, 1 Ex 1.VII.2013 leg. KA
- AUT Austria, Osttirol, Lienz/ Südtiroler Siedlung, 1 Ex 19.VI.2013 leg. KA
- AUT Austria, Styria, Fernitz/ Graz, 5 Ex 1.VIII.1972 leg. KM
- AUT Austria, Vorarlberg, Feldkirch env., 1 Ex 8.VIII.1938 leg. Moosbrugger
- AUT Austria, Vorarlberg, Nenzing-Latz, 1 Ex 13.VII.1997 leg. Huemer P.
- AUT Austria, Vorarlberg, Rankweil/ Sankt Peter Bühel, 1 Ex 17.VI.2012 leg. Aistleitner U.
- AUT Austria, Vienna, Vienna XIX, 2 Ex leg. Mader (no date)
- DEU Germany, Baden-Württemberg, Saulgau, 1 Ex 1.VII.2001 leg. Märzke
- DEU Germany, Bavaria, Dornheim, 1 Ex 25.VI.1963 leg. Eitschberger U.
- DEU Germany, Bavaria, Schöngesing, 1 Ex 2.VII.1982 leg. Schacht W.
- DEU Germany, Bavaria, Winterhausen env., 1 Ex 15.VI.1974 leg. Mager H.J.
- ESP Spain, Valencia, Alicante, 3 Ex 1.VIII.1969 leg. Frieser R.
- FRA France, Provence-Alpes-Cote d'Azur, Fontaine de Vaucluse, 1 Ex 22.VI.1971 leg. Aspöck H.& U.

- GRC Greece, Crete, Samaria gorge, 1 Ex 1.VII.1986 leg. HE  
 ITA Italy, Brescia, Gargnano, 1 Ex 1.VIII.1972 leg. HE  
 ITA Italy, Latium, Rom W/ Palidoro, 1 Ex 20.VIII.1963 leg. HE, 2 Ex 1.VIII.1964 leg. HE, 1 Ex 9.VIII.1965 leg. HE  
 ITA Italy, Südtirol, Brixen/ Kassianstrasse 14, 1 Ex 26.VI.1965 leg. Peez A., 1 Ex 17.VI.1969 leg. Peez A.  
 ITA Italy, Südtirol, Lichtenberg, 1 Ex 1.VII.1952 leg. Kofler F.J.  
 ITA Italy, Trentino-Südtirol, Castelfeder, 1 Ex 26.VI.1954 leg. HA, 1 Ex 22.VII.1954 leg. HA, 1 Ex 22.VII.1955 leg. HA, 1 Ex 21.VI.1957 leg. HA, 1 Ex 2.VIII.1957 leg. HA

*Reduvius tabidus* KLUG, 1830

- DZA Algeria, Hirhatok/ Nogga, 1 Ex 27.VIII.1975 leg. Plössl B.  
 IRN Iran, N Bandar Abbas, 1 Ex 9.IV.1972 leg. Ressler F.  
 IRN Iran, W Shiraz, 2 Ex. V. 1995 leg. Holzschuh C.  
 TUN Tunisia, Gabès, Matmata/ Gabes, 1 Ex 8.V.1992 leg. Gusenleitner J.  
 TUR Turkey, Nemrut, 3 Ex. 4.VII.2009 leg. Louda J.  
 TUR Turkey, Ilgaz Mts., near Cherkez, 1 Ex. 20.VI.2009 leg. Gurko V.

*Reduvius testaceus* (HERRICH-SCHAEFFER, 1845)

- IRN N-Iran, Khorasan Prov., Dareh Dashat Valley, 2 Ex. 16.VI.2007 leg. EH  
 IRN N-Iran, Khorasan Prov., Golestan N.P., 1 Ex. 19.VI.2007 leg. Wieser Ch.  
 IRN N-Iran, Khorasan Prov., Golestan N.P. Valley to Almeh, 1 Ex. 18.VI.2007 leg. HE  
 IRN N-Iran, Khorasan Prov., Sulgoord, 1 Ex. 20. VI. 2007 leg. Wieser Ch.  
 IRN N-Iran, Khorasan Prov., Golestan N.P. Almeh, 1 Ex. 17.VI.2007 leg. HE  
 KGZ Kyrgyzstan, Batken Distr. Kadamjay (= Frunze), 1 Ex 6.VI.2010 leg. Rausch H. & R.  
 KGZ Kyrgyzstan, Jalal-Abad, Distr. Nooken, W Fergana Mountains, Beketschal valley, 1 Ex. 22.VI.2010 leg. Rausch H. & R.  
 KGZ Kyrgyzstan, Dzhahal-Abadskaya, Distr. Utch-Terek, 1 Ex. 16.VI.1996 leg. Rausch H. & R.  
 KGZ Kyrgyzstan, Oshskaya Oblast, Distr. Alajsky river Gul' cha, 1 Ex. 14.VII.1998 leg. Rausch H. & R.  
 KGZ Kyrgyzstan, Prov. Jalal-Abad, Distr. Nooken, Beketschal valley, 3 Ex. 4.VI.2008 leg. Rausch H. & R.  
 KGZ Kyrgyzstan, Prov. Jalal-Abad, Distr. Nooken, W slope Fergana Mountains, Beketschal-Bach, 1 Ex. 22.VI.2010 leg. Pöll N.  
 TUR Turkey, Nemrut, 1 Ex. 4.VII.2009 leg. Louda J.



**Genus *Tapeinus* LAPORTE, 1833***Tapeinus fuscipennis* (STÅL, 1874)

MYS Malaysia, Kelantan, Tanah Rata/ Tanah Kerajaan, 1 Ex 12. IV. 2007 leg. Cechovsky P.  
 TWN Taiwan, Shanmei, 1 Ex 23. V. 1977 leg. Klapperich J.

**Subfamily Cetherinae JEANNEL, 1919****Genus *Cethera* AMYOT & SERVILLE, 1843***Cethera musiva* (GERMAR, 1837) exld

MDG Madagascar, Antsiranana, Montagne de Abre NP, 1 Ex 20. XII. 2003 leg. Dolin R.

**Subfamily Saicinae STÅL, 1859****Genus *Gallobelgicus* DISTANT, 1906***Gallobelgicus heissi* RÉDEI & TSAI, 2009

TWN Taiwan, Taiwan, Fenchihu, 1 Ex 9. IV. 1977 leg. Klapperich J., 1 Ex 25. V. 1977  
 leg. Klapperich J. Paratypes

**Genus *Polytoxus* SPINOLA, 1850***Polytoxus siculus* (A. COSTA, 1842)

ITA Italy, Campania, Kap Palinuro, 1 Ex 1. I. 1984 leg. Dioli

**Subfamily Stenopodainae AMYOT & SERVILLE, 1843****Genus *Oncocephalus* KLUG, 1830***Oncocephalus acutangulus* REUTER, 1882

GRC Greece, Crete, Kastellakia, 1 Ex 30. V. 1977 leg. Malicky H., 1 Ex 5. VI. 1977 leg.  
 Malicky H.

GRC Greece, Crete, Limni Kournas, 1 Ex 20. V. 1989 leg. Frieser R.

GRC Greece, Crete, Rethymnon env./ Sises, 1 Ex 18. V. 1977 leg. Malicky H., 1 Ex  
 23. V. 1977 leg. Malicky H., 1 Ex 5. VI. 1977 leg. Malicky H.

IRN Iran, Mazandaran, Mazanderan/ Miankaleh Wildlife Sanctuary and Wetland,  
 21 Ex 12. V. 2001 leg. HE

MAR Morocco, Oukaimeden, 1 Ex 11. VII. 1975 leg. Gusenleitner J.

MAR Morocco, Marrakesh-Safi, Jbel Toubkal/ Imlil, 1 Ex 24. V. 1995 leg. KH.

TUR Turkey, Balikesir, Gönen, 1 Ex 9. VI. 1958 leg. Wellschmied

*Oncocephalus gutturosus* DISPONS, 1965

ARE Arabian Emirates, Abu Dhabi, Al Ain, 1 Ex 30. VI. 1978 leg. HE

SAU Saudi Arabia, Asch-Scharqiyya, Al Chubar (Khobar), 1 Ex 20. VIII. 1982 leg. HE

*Oncocephalus cf. impictipes* JAKOVLEV, 1885

KGZ Kyrgyzstan, Prov. Jalal-Abad, Distr. Nooken, Beketschal valley, 1 Ex. 4. VI. 2008  
 leg. Rausch H. & R.

*Oncocephalus milleri* LINDBERG, 1953

ESP Spain, Canary Islands, Playa del Aguila, 1 Ex 3.XII.1997 leg. Grimm R.

*Oncocephalus obsoletus* KLUG, 1830

IRN Iran, N-Chorasan, Golestan NP/ Almeh, 1 Ex 22.V.2001 leg. HE

IRN Iran, Khorasan, Golestan/ Dasht, 2 Ex 20.V.2001 leg. HE

SYR Syria, Dair-az-Zur, Deir-ez-Zor, 3 Ex 11.VI.1980 leg. Mühle H.

*Oncocephalus pilicornis* REUTER, 1882

GRC Greece, Crete, Limni Kournas, 2 Ex 20.V.1989 leg. Frieser R.

GRC Greece, Crete, Rethymnon env./ Sises, 3 Ex 23.V.1977 leg. Malicky H.

IRN Iran, Mazandaran, Mazanderan/ Miankaleh Wildlife Sancutary and Wetland,  
4 Ex 12.V.2001 leg. HE

ITA Italy, Friaul-Venice, Monfalcone, 2 Ex 26.V.1993 leg. Deutsch H.

ITA Italy, Pordenone, Cellino, 1 Ex 6.VI.2008 leg. Rau A.

ITA Italy, Pordenone, Cellino, 6 Ex 6.VI.2008 leg. HE

ITA Italy, Pordenone, Magredi di Vivaro, 1 Ex 10.VI.2008 leg. Deutsch H.

ITA Italy, Trieste, 1 Ex 19.V.1988 leg. Deutsch H.

PAK Pakistan, Punjab, Rawalpindi, 1 Ex 13.X.1971 leg. HE

SYR Syria, Dair-az-Zur, Deir-ez-Zor, 1 Ex 11.VI.1980 leg. Mühle H.

TUR Turkey, Adana, Eski Misis, 1 Ex 28.V.1970 leg. Holzschuh C.

*Onocephalus squalidus* (ROSSI, 1790)

FRA France, Provence-Alpes-Cote d'Azur, Bormes, 1 Ex 31.V.1975 leg. Mager & Mühle

GRC Greece, Kefalo, 3 Ex 11.XI.1976 leg. Gross W. U. 3& L.

HRV Croatia, Istria, Fazana, 1 Ex 8.V.2013 leg. LM

HRV Croatia, Istria, Krsan/ Plomin Luka, 2 Ex 20.VI.1965 leg. Wellschmied

IRN Iran, Mazandaran, Mazanderan/ Miankaleh Wildlife Sancutary and Wetland,  
1 Ex 12.V.2001 leg. HE

ITA Italy, Piemont, Santo Stefano Belbo, 1 Ex 13.X.1992 leg. HE

ITA Italy, Savona, Noli, 1 Ex 8.VI.1961 leg. Kusdas K.

MAR Marocco, Béni Mellal-Khenifra, Beni-Mellal, 3 Ex 1.IV.1984 leg. HE

MNE Montenegro, Opstina Cetinje, Skadarsko Jezero NE/ Donja Sela, 1 Ex 3.VI.2014  
leg. Eckelt A.

TUR Turkey, Hatay, Hassa W, 1 Ex 14.V.1969 leg. Holzschuh C.

TUR Turkey, Mugla, Fethiye / Yaniklar, 1 Ex 15.VI.1992 leg. Egger M.

*Oncocephalus thoracicus* FIEBER, 1861

TUR Turkey, Antalya, Incekum, 1 Ex 1.I.1985 leg. Frieser R.

TUR Turkey, Balikesir, Gönen, 1 Ex 9.VI.1958 leg. Wellschmied

TUR Turkey, Manavgat/ Antalya NW, 2 Ex 26.V.1968 leg. Holzschuh, C.

**Genus *Pygolampis* GERMAR, 1817**

*Pygolampis bidentata* (GOEZE, 1778)

AUT Austria, Burgenland, Illmitz, 1 Ex 20.IX.1965 leg. HA

AUT Austria, Burgenland, Stoob/ Noplerberg, 1 Ex 23.V.2008 leg. HE

AUT Austria, Carinthia, Ferlach, 1 Ex 1.V.1994 leg. Wieser Ch.

AUT Austria, Lower Austria, Baden W/ Helenental, 1 Ex 26.IV.2014 leg. Wolf I.

AUT Austria, Lower Austria, Gaming, Rothwald, Lassingniederung, 1 Ex 27.VII.1996 leg. Ressler F.

AUT Austria, Lower Austria, Schauboden b. Purgstall, 1 Ex 29.V.1976 leg. Rausch H.

AUT Austria, Nordtirol, Angerberg/ Inn left waterside, 1 Ex 22.VI.1963 leg. PE

AUT Austria, Nordtirol, Fiecht/ Schwaz NW, 1 Ex 23.III.1950 leg. Kofler F.J.

AUT Austria, Nordtirol, Innsbruck env., 1 Ex 14.XI.1954 leg. HA, 1 Ex 1.IX.1967 leg. HA

AUT Austria, Nordtirol, Innsbruck, Arzl, 1 Ex 8.XI.1953 leg. HA, 1 Ex 14.XII.1953 leg. HA

AUT Austria, Nordtirol, Innsbruck, Kranebitten, 1 Ex 8.VI.1954 leg. Wohlmann R.

AUT Austria, Nordtirol, Innsbruck/ Amraser Au, 1 Ex 26.VIII.1961 leg. PE

AUT Austria, Nordtirol, Innsbruck/ Arzler Lehmgrube, 2 Ex 2.V.1953 leg. Wohlmann R.

AUT Austria, Nordtirol, Innsbruck/ Hötting, Sprengerkreuz, 1 Ex 7.VI.1978 leg. Wörn-dle A:

AUT Austria, Nordtirol, Innsbruck/ Hungerburg, 1 Ex 13.X.1966 leg. HE

AUT Austria, Nordtirol, Innsbruck/ Planötzenhof, 1 Ex 16.X.1966 leg. HA

AUT Austria, Nordtirol, Innsbruck/ Pulverturm, 1 Ex 17.VII.1959 leg. HA

AUT Austria, Nordtirol, Innsbruck/ Rossau, 1 Ex 24.X.1953 leg. HA

AUT Austria, Nordtirol, Innsbruck/ Mühlau, 1 Ex 10.VI.1952 leg. Wohlmann R., 1 Ex 8.XI.1953 leg. HA, 1 Ex 19.V.1955 leg. HA

AUT Austria, Nordtirol, Innsbruck: Mühlau, Schillerhof, 1 Ex 27.VI.1971 leg. HA

AUT Austria, Nordtirol, Kufstein, 1 Ex 1.VI.1966 leg. HE

AUT Austria, Nordtirol, Martinau/ Elmen N, 1 Ex 23.V.1950 leg. Lechleitner

AUT Austria, Nordtirol, Mils bei Hall, 1 Ex 13.III.1955 leg. HA

AUT Austria, Nordtirol, Pill/ Schwaz SW, 1 Ex 9.V.1946 leg. Kofler F.J.

AUT Austria, Nordtirol, Schwarzwassertal, 1 Ex 8.X.1943 leg. Rief O.

AUT Austria, Nordtirol, Stans/ Schwaz NE, 1 Ex 7.III.1946 leg. Kofler F.J.

AUT Austria, Nordtirol, Stanz/ Landeck NW, 1 Ex 12.VI.1960 leg. HA

- AUT Austria, Nordtirol, Taxerhof/ Ampass SE, 1 Ex 7.IX.1969 leg. HA  
 AUT Austria, Nordtirol, Thierburg - Fritzens NE, 1 Ex 16.V.1965 leg. HE  
 AUT Austria, Osttirol, Maria Trost/ Oberlienz SE, 1 Ex 12.V.1960 leg. KA  
 AUT Austria, Osttirol, Nikolsdorf, 1 Ex 9.VI.1991 leg. KA  
 AUT Austria, Osttirol, Nörsach/ Nikolsdorf SE, 1 Ex 30.V.1992 leg. KA  
 AUT Austria, Osttirol, St. Jakob in Deferegggen/ Wasserweg, 1 Ex 12.VI.2002 leg. KA  
 AUT Austria, Osttirol, St. Johann im Walde SE/ Weirer, 1 Ex 3.VI.1967 leg. KA  
 AUT Austria, Osttirol, Tristacher Au, 1 Ex 16.V.1964 leg. KA  
 DEU Germany, Bavaria, Siebnach, 1 Ex 25.V.1977 leg. Schuster G.  
 FRA France, Auvergne-Rhône-Alpes, Ceyzerieu E / Marais de Lavours, 1 Ex 20.VI.2014  
 leg. LM  
 IRN Iran, Mazandaran, Mazanderan/ Miankaleh Wildlife Sanctuary and Wetland,  
 4 Ex 12.V.2001 leg. HE  
 ITA Italy, Südtirol, Brixen/ Josefssiedlung, 1 Ex 26.V.1965 leg. Peez A.  
 ITA Italy, Südtirol, Brixen/ Ratzötzt, 1 Ex 30.VI.1961 leg. Peez A.  
 ITA Italy, Südtirol, Brixen/ Tschötscher Heide, 1 Ex 19.V.1964 leg. Peez A.  
 ITA Italy, Südtirol, Montan, 2 Ex 1.IV.1955 leg. Wohlmann R.  
 MNE Montenegro, Opstina Podgorica, Skadarsko Jezero/ Vranjina E, 1 Ex 3.VI.2014  
 leg. Eckelt A.

**Genus *Stirogaster* JAKOVLEV, 1874**

*Stirogaster desertorum* HORVATH, 1913

- IRN S-Iran, Hormozgan Prov., Beshagerd Mts, Angohran vill., 3 Ex. 25.III.2000 leg.  
 Plutenko A.

*Stirogaster fausti* JAKOVLEV, 1874

- ISR Israel, Southern District, Ein Gedi, 1 Ex 12.IV.1981 leg. Wewalka G.

**Genus *Thodelmus* STÅL, 1859**

*Thodelmus falleni* STÅL, 1859 exld

- PAK Pakistan, Khyber Pakhtunkhwa, Swat/ Madyan, 1 Ex 19.VI.1971 leg. Holzschuh C.

**Subfamily Triatominae JEANNEL, 1919**

**Genus *Triatoma* LAPORTE, 1832**

*Triatoma rubrofasciata* (DE GEER, 1773)

- IDN Indonesia, Sumatera Utara, Dolok Merangir, 1 Ex 1.XII.1984 leg. Diehl E.

*Triatoma migrans* BREDDIN, 1903 exld

- IDN Indonesia, Prabab/ Tobasee, 1 Ex 1.VIII.1985 leg. Diehl E.

- IDN Indonesia, Sumatera Barat, Pakkat, 1 Ex 25.XII.1978 leg. Diehl E.

IDN Indonesia, Sumatera Barat, Sindar Raja, 1 Ex 22.I.1977 leg. Diehl E.

IDN Indonesia, Sumatera Utara, Dolok Merangir, 1 Ex 22.IX.1976 leg. Diehl E., 1 Ex 1.VII.1976 leg. Diehl E., 1 Ex 15.V.1978 leg. Diehl E.

### **Subfamily Harpactorinae AMYOT & SERVILLE, 1843**

#### **Genus *Agyrius* STÅL, 1863**

*Agyrius podagricus* STÅL, 1863 exld

MYS Malaysia, Johor, Johor/ Kota Tinggi/ 30 km N, 1 Ex 7.IV.2007 leg. Cechovsky P,

#### **Genus *Amphibolus* KLUG, 1830**

*Amphibolus beduinus* PUTON, 1881

DZA Algeria, El Bayadh, Saida/ 80 km S, 1 Ex 24.IV.1973 leg. Mager

#### **Genus *Brassivola* DISTANT, 1904**

*Brassivola hystrix* DISTANT, 1904 exld

IND India, Tamil Nadu, Kotagiri/ Kunjappanai, 1 Ex 22.V.1999 leg. Tryzna M.

#### **Genus *Biasticus* STÅL, 1867**

*Biasticus flavinotus* (MATSUMARA, 1913) exld

TWN Taiwan, Shanmei, 3 Ex 23.V.1977 leg. Klapperich J.

#### **Genus *Callistodema* REUTER, 1890**

*Callistodema fasciata* (KOLENATI, 1857)

IRN Iran, Qazvin, Qazvin, 1 Ex 1.V.1975 leg. Holzschuh C.

TUR Turkey, Ephesos, 1 Ex 29.IV.1986 leg. Braun

#### **Genus *Coranus* CURTIS, 1833**

*Coranus aegyptius* (FABRICIUS, 1775)

GRC Greece, Crete, Aghia Marina, 2 Ex 5.V.1985 leg. HE

GRC Greece, Crete, Limni Kournas, 1 Ex 20.V.1989 leg. Frieser R.

GRC Greece, Crete, Vai/ Crete, 2 Ex 24.IV.1983 leg. HE

PRT Portugal, Madeira, Funchal, 2 Ex 4.X.1993 leg. HE

SAU Saudi Arabia, Asir, Asir/ Al Sooda, 2 Ex 27.VIII.1982 leg. HE

TUN Tunisia, Gabès, Matmata/ Gabes, 4 Ex 20.III.1983 leg. HE

YEM Yemen, Capital Municipality, Sanaa env./ Wadi Dhar, 19 Ex 25.II.1989 leg. HE

*Coranus angulatus* STÅL, 1874

PAK Pakistan, Sindh, Karachi, 1 Ex 22.IX.1972 leg. HE

SAU Saudi Arabia, Asch-Scharqiyya, Al Chubar (Khobar), 7 Ex 4.IX.1982 leg. HE

SAU Saudi Arabia, Jizan, Abu Arish, 1 Ex 1.IV.1983 leg. HE

TUN Tunisia, Gabès, Matmata/ Gabes, 3 Ex 20.III.1983 leg. HE

*Coranus griseus* (ROSSI, 1790)

- ESP Spain, Balearic Islands, Santa Ponsa, 3 Ex 1.VII.1990 leg. HE  
 FRA France, Auvergne-Rhône-Alpes, Le Breuil sur Couze E/ Allier, 1 Ex 23.VI.2014 leg. LM  
 FRA France, Occitanie, Col d'Eusebe, 6 Ex 12.VIII.1974 leg. HE  
 ITA Italy, Sardinia, Pallosu/ Capo Mannu, 2 Ex 24.IV.1992 leg. HE  
 ITA Italy, Savona, Noli, 1 Ex 5.VI.1961 leg. Kusdas K.  
 ITA Italy, Südtirol, Brixen/ Pallaus, 1 Ex 20.VIII.1968 leg. Peez A.  
 ITA Italy, Südtirol, Laatsch, 1 Ex 9.VI.1990 leg. Heim S.  
 ITA Italy, Südtirol, Montan, 2 Ex 8.IX.1954 leg. Wohlmann R., 2 Ex 1.IV.1955 leg. Wohlmann R., 1 Ex 1.VII.1955 leg. Wohlmann R.  
 ITA Italy, Südtirol, Moritzing, 1 Ex 14.VI.1954 leg. Ratter 1 Ex 1.VI.1956 leg. cf. Ratter  
 ITA Italy, Südtirol, Sigmundskron, 4 Ex 18.IV.1960 leg. HA  
 ITA Italy, Südtirol, Staben, Sonnenhang, 1 Ex 28.III.1971 leg. Zschästak A.  
 ITA Italy, Trentino, Mori NE, Ravazzone, 6 Ex 26.VII.1960 leg. HA  
 ITA Italy, Trentino-Südtirol, Castelfeder, 1 Ex 22.VII.1954 leg. HA, 1 Ex 21.VI.1957 leg. HA, 1 Ex 21.VI.1957 leg. HA, 1 Ex 1.VIII.1957 leg. HA, 1 Ex 3.VIII.1957 leg. HA  
 ITA Italy, Trentino-Südtirol, Mori W/ Loppio, 1 Ex 5.V.2013 leg. LM

*Coranus kerzhneri* P.V.PUTSHKOV, 1982

- AUT Austria, Burgenland, Horitschon, 1 Ex 23.VI.2002 leg. HE  
 HUN Hungary, Veszprem, Tihany, 1 Ex 18.IX.1986 leg. Aukema B.  
 ITA Italy, Südtirol, Kalterer See, 4 Ex 12.IX.1953 leg. HA

*Coranus kiritshenkoi* BERGEVIN, 1932

- ESP Spain, Gran Canaria, Maspalomas, 1 Ex 19.I.1997 leg. Grimm R.

*Coranus laticeps* WAGNER, 1952

- HUN Hungary, Bacs-Kiskun Megye, Bugac, 3 Ex 18.VIII.1983 leg. HE

*Coranus niger* (RAMBUR, 1840)

- ITA Italy, Sardinia, Santa Margherita di Pula, 1 Ex 20.VI.1987 leg. HE  
 SAU Saudi Arabia, Jizan, Abu Arish, 1 Ex 1.IV.1983 leg. HE

*Coranus spiniscutis* REUTER, 1881

- PAK Pakistan, Punjab, Rawalpindi, 2 Ex 13.X.1971 leg. HE

*Coranus subapterus* (DE GEER, 1773)

- ALB Albania, Vlora, Borsh, 1 Ex 13.V.2017 leg. Mühle H.  
 AUT Austria, Nordtirol, Innsbruck, Arzl, 1 Ex 7.VIII.1948 leg. Wörndle A.

- AUT Austria, Nordtirol, Innsbruck, Arzl, 3 Ex 21.IX.1958 leg. HA  
 AUT Austria, Carinthia, Weißensee, 2 Ex 8.VII.1958 leg. Weber H.  
 AUT Austria, Lower Austria, Schauboden, 1 Ex 11.IX.1979 leg. Ressler F.  
 AUT Austria, Nordtirol, Elmen, 1 Ex 1.X.1945 leg. Lechleitner  
 AUT Austria, Nordtirol, Fließ Trockenhänge, 1 Ex 3.VII.2016 leg. Brandner J.  
 AUT Austria, Nordtirol, Innsbruck/ Amraser Au, 3 Ex 26.VIII.1961 leg. PE  
 AUT Austria, Nordtirol, Innsbruck/ Hötting, 1 Ex 6.X.1953 leg. Ratter J.  
 AUT Austria, Nordtirol, Innsbruck/ Mühlau, Scheibenbichl, 1 Ex 19.X.1952 leg. HA  
 AUT Austria, Nordtirol, Landeck, 1 Ex 25.VII.1961 leg. HA  
 AUT Austria, Nordtirol, Martinswand/ Zirl SE, 1 Ex 4.IX.1954 leg. PE  
 AUT Austria, Nordtirol, Patsch, 1 Ex 13.VIII.1953 leg. Wohlmann R.  
 AUT Austria, Nordtirol, Pfunds SE, Pfundser Tal, 1 Ex 6.IX.1940 leg. PE  
 AUT Austria, Nordtirol, Thaurer Schloß/ Innsbruck NE, 3 Ex 11.X.1955 leg. HA  
 AUT Austria, Nordtirol, Völs, 1 Ex 6.IX.1958 leg. HA  
 AUT Austria, Nordtirol, Vomperbach/ Schwaz SW, 1 Ex 26.IX.1964 leg. HE  
 AUT Austria, Nordtirol, Wildmoosalm/ Seefeld in Tirol N, 1 Ex 2.IX.1968 leg. HE  
 AUT Austria, Vorarlberg, Feldkirch, 1 Ex 25.VII.1940 leg. Moosbrugger  
 AUT Austria, Vorarlberg, Feldkirch, 1 Ex leg. Moosbrugger, no date  
 DEU Germany, Rheinland-Pfalz, Mainzer Sand, 1 Ex 9.IX.1978 leg. HE  
 ITA Italy, Aostatal, 5 Ex 5.VIII.1964 leg. Riccardo,  
 ITA Italy, Südtirol, Brixen, 1 Ex 30.VII.1952 leg. Kofler F.J.  
 ITA Italy, Südtirol, Brixen/ Elvaser Bühl, 1 Ex 2.X.1965 leg. Peez A.  
 ITA Italy, Südtirol, Brixen/ Neustift, 1 Ex 8.X.1961 leg. Peez A.  
 ITA Italy, Südtirol, Brixen/ Schrambach, 1 Ex 14.IX.1964 leg. Peez A.  
 ITA Italy, Trentino-Südtirol, Castelfeder, 3 Ex 26.IX.1954 leg. HA

*Coranus woodroffei* V.P. PUTSHKOV, 1982

- DEU Germany, Bavaria, Bidingen S/ Langweid/ Weiler Moos, 1 Ex 10.IX.1997 leg.  
 Schuster G.  
 NLD The Netherlands, Utrecht, Utrecht/ Prattenburg, 3 Ex 7.X.1985 leg. Aukema B.

**Genus *Cosmolestes* STÅL, 1867**

*Cosmolestes pictus* (KLUG, 1830)

- SAU Saudi Arabia, Jizan, Abu Arish, 1 Ex 1.IV.1983 leg. HE

*Cosmolestes picticeps* (STÅL, 1859) exld

- MYS Malaysia, Pahang, Endau Rompin NP, 54 Ex 9.IV.2008 leg. Cechovsky P.  
 MYS Malaysia, Johor, Johor/ Kota Tinggi/ 30 km N, 21 Ex 7.IV.2007 leg. Cechovsky P.

**Genus *Cydnocoris* STÅL, 1866***Cydnocoris fasciatus* REUTER, 1881

MYS Malaysia, Pahang, Endau Rompin NP, 1 Ex 9.IV.2008 leg. Cechovsky P.

*Cydnocoris hyalinus* MILLER, 1955

IDN Indonesia, Sumatera Utara, Dolok Merangir, 1 Ex 21.IV.1975 leg. Diehl F.

IDN Indonesia, Sumatera Barat, Sindar Raja, 1 Ex 14.X.1979 leg. Diehl F.

**Genus *Nagusta* STÅL, 1859***Nagusta goedelii* (KOLENATI, 1857)

GRC Greece, Crete, Chersonisos, 1 Ex 1.IX.1983 leg. Frieser R.

GRC Greece, Crete, Rethymnon env./ Sises, 1 Ex 10.VIII.1977 leg. Malicky H.

GRC Greece, Makedonia, Konitsa/ Aoos-gorge, 1 Ex 9.IX.1996 leg. Knoflach B.

ITA Italy, Tuscany, San Quirico d'Orcia, 1 Ex 23.X.2018 leg. HE

TUR Turkey, Bilecik, Bilecik env., 1 Ex 14.VI.1967 leg. Aspöck H.

*Nagusta simonis* PUTON, 1890

SAU Saudi Arabia, Mekka, Taif, 1 Ex 5.IX.1982 leg. HE

**Genus *Panthous* STÅL, 1863***Panthous bimaculatus* DISTANT, 1903 exld

IND India, Kerala, Pa Thailandnamthitta/ 50 km NW, 1 Ex 15.V.1999 leg. Tryzna M.

*Panthous daedalus* STÅL, 1863 exld

MYS Malaysia, Johor, Johor/ Kota Tinggi/ 30 km N, 3 Ex 7.IV.2007 leg. Cechovsky P.

MYS Malaysia, Kelantan, Kelantan/ between Kampong Raja and Gua Musang, 1 Ex 1.IV.2006 leg. Cechovsky P.

**Genus *Polidius* STÅL, 1858***Polidius armatissimus* STÅL, 1859

MYS Malaysia, Pahang, Endau Rompin NP, 120 Ex 9.IV.2008 leg. Cechovsky P., 2 Ex 13.IV.2009 leg. Cechovsky P.

**Genus *Repipta* STÅL, 1859***Repipta annulipes* BARBER, 1925 exld

ECU Ecuador, Galápagos, Santa Cruz/ Puerto Ayora, 2 Ex 1.II.1987 leg. HE

**Genus *Rhapactor* PUTON, 1887***Rhapactor biparticeps* PUTON, 1887

TUN Tunisia, Sousse, Sousse, 1 Ex 7.VII.1976 leg. Mager &amp; Mühle

**Genus *Ribirbus* STÅL, 1861***Ribirbus trochantericus* STÅL, 1861

MYS Malaysia, Pahang, Endau Rompin NP, 1 Ex 9.IV.2008 leg. Cechovsky P.



**Genus *Rhynocoris* HAHN, 1833***Rhynocoris annulatus* (LINNAEUS, 1758)

- AUT Austria, Burgenland, Jois, 1 Ex 1.VI.1945 leg. Ratter J.  
AUT Austria, Burgenland, Unterfrauenhaid SW, 1 Ex 26.V.2005 leg. HE  
AUT Austria, Carinthia, Sablatnigmoor, 1 Ex 13.V.1989 leg. Kofler A. & Mildner  
AUT Austria, Lower Austria, Dunkelsteinerwald, 1 Ex leg. Kubinyi  
AUT Austria, Lower Austria, Klosterneuburg, 1 Ex 31.VII.1964 leg. Aspöck H.  
AUT Austria, Lower Austria, Rohrwald, 1 Ex leg. Mader  
AUT Austria, Lower Austria, Schauboden/ Erlaufau, 1 Ex 12.VI.1985 leg. Ressler F.  
AUT Austria, Lower Austria, Scheibbs SW/ Lueggraben, 1 Ex 27.V.1984 leg. Ressler F.  
AUT Austria, Lower Austria, Wang/ Ewixengraben, 1 Ex 5.VII.1980 leg. Ressler F.  
AUT Austria, Lower Austria, Weidling, 1 Ex leg. Mader  
AUT Austria, Nordtirol, Ahrntal - Innsbruck S, 1 Ex 5.VI.1953 leg. Wohlmann R.  
AUT Austria, Nordtirol, Arzberg/ Schwaz S, 1 Ex 6.IV.1946 leg. Kofler F.J.  
AUT Austria, Nordtirol, Arzler Alm, 1 Ex 30.V.1943 leg. Wörndle A.  
AUT Austria, Nordtirol, Forchach/ Bannwald, 2 Ex 16.V.1945 leg. Kofler F.J., 1 Ex 17.V.1945 leg. Kofler F.J., 1 Ex 19.V.1945 leg. Kofler F.J.  
AUT Austria, Nordtirol, Fritzens, 2 Ex 2.VI.1964 leg. HE  
AUT Austria, Nordtirol, Hall in Tirol env., 1 Ex 24.VI.1949 leg. Rief O.  
AUT Austria, Nordtirol, Innsbruck Allerheiligenhöfe, 4 Ex 23.V.1965 leg. HA  
AUT Austria, Nordtirol, Innsbruck N/ Nordkette, 2 Ex 18.V.1953 leg. Wohlmann R.  
AUT Austria, Nordtirol, Innsbruck/ Hötting Sprengerkreuz, 1 Ex 17.V.1948 leg. PE  
AUT Austria, Nordtirol, Innsbruck/ Hungerburg, 1 Ex 19.VI.1955 leg. HA  
AUT Austria, Nordtirol, Innsbruck/ Kranebitten, 1 Ex 6.V.1927 leg. Ratter J., 1 Ex 26.V.1938 leg. Ratter J.  
AUT Austria, Nordtirol, Innsbruck/ Peterbründl, 1 Ex 26.VI.1960 leg. HA  
AUT Austria, Nordtirol, Innsbruck/ Mühlau Schillerhof, 1 Ex 16.VI.1961 leg. HA  
AUT Austria, Nordtirol, Kaisertal - Kufstein NE, 1 Ex 10.VI.2006 leg. HE  
AUT Austria, Nordtirol, Kratzer/ Vils E, 1 Ex 1.VI.1945 leg. Lechleitner  
AUT Austria, Nordtirol, Mieming/ Telfs W, 1 Ex 11.V.1948 leg. Wörndle A.  
AUT Austria, Nordtirol, Mils bei Hall, 1 Ex 18.VII.1948 leg. PE  
AUT Austria, Nordtirol, Münster, 1 Ex 11.VII.1976 leg. HA  
AUT Austria, Nordtirol, Narrenkogel/ Umhausen SE, 1 Ex 30.V.1999 leg. Thailandler B.  
AUT Austria, Nordtirol, Natterer See/ Innsbruck SW, 1 Ex 17.V.1953 leg. HA  
AUT Austria, Nordtirol, Natters N/ Natterer Boden, 1 Ex 11.VIII.1962 leg. HA  
AUT Austria, Nordtirol, Patsch, 1 Ex 8.VI.1953 leg. Wohlmann R.

- AUT Austria, Nordtirol, Pill/ Schwaz SW, 1 Ex 8.IV.1946 leg. Kofler F.J., 1 Ex 12.IV.1946 leg. Kofler F.J., 1 Ex 26.IV.1946 leg. Kofler F.J.
- AUT Austria, Nordtirol, Rossfall/ Innsbruck NW, 1 Ex 5.VI.1961 leg. HA
- AUT Austria, Nordtirol, Scharnitz, 1 Ex 14.VI.1944 leg. Ratter J., 1 Ex 30.V.1947 leg. Ratter J.
- AUT Austria, Nordtirol, Schöfner Berg/ Matrei am Brenner NE, 1 Ex 2.IX.1962 leg. HA
- AUT Austria, Nordtirol, Sillschlucht/ Innsbruck S, 2 Ex 18.VI.1975 leg. HA
- AUT Austria, Nordtirol, St.Georgenberg/ Schwaz NW, 2 Ex 9.X.1946 leg. Kofler F.J.
- AUT Austria, Nordtirol, Stablalpe/ Elmen, 1 Ex 8.VII.1941 leg. Lechleitner
- AUT Austria, Nordtirol, Stans/ Schwaz NE, 2 Ex 17.V.1953 leg. Wohlmann R., 1 Ex 8.V.1955 leg. HA
- AUT Austria, Nordtirol, Stefansbrücke/ Mutters SE, 1 Ex 2.VI.1937 leg. Ratter J.
- AUT Austria, Nordtirol, Telfes im Stubai, 1 Ex 22.VII.1965 leg. HE
- AUT Austria, Nordtirol, Telfs, 1 Ex 19.VIII.1944 leg. Wörndle A.
- AUT Austria, Nordtirol, Tratzberg/ Jenbach SW, 1 Ex 4.VI.1950 leg. Kofler F.J., 1 Ex 26.V.1951 leg. Wohlmann R.
- AUT Austria, Nordtirol, Trins, 1 Ex 26.VI.1947 leg. PE
- AUT Austria, Nordtirol, Vennatal/ Brennergebiet, 1 Ex 1.IX.1967 leg. HE
- AUT Austria, Nordtirol, Viller Moor/ Innsbruck S, 1 Ex 24.V.1930 leg. Ratter J., 1 Ex 7.VII.1948 leg. Ratter J.
- AUT Austria, Nordtirol, Vomperberg/ Schwaz W, 1 Ex 1.VIII.1974 leg. HA
- AUT Austria, Nordtirol, Wiesing, 1 Ex 13.X.1946 leg. Kofler F.J.
- AUT Austria, Nordtirol, Zenzenhof/ Innsbruck S, 1 Ex 6.VI.1948 leg. PE
- AUT Austria, Nordtirol, Zirl env., 1 Ex 13.V.1967 leg. HE
- AUT Austria, Upper Austria, Grünburg, 1 Ex 22.V.1972 leg. Gusenleitner J.
- AUT Austria, Osttirol, Bad Jungbrunn, 1 Ex 29.V.2005 leg. KA
- AUT Austria, Osttirol, Connyalm/ Obertilliach NNE, 5 Ex 17.VII.2007 leg. KA
- AUT Austria, Osttirol, Geiersbichl/ Debanttal, 1 Ex 26.V.1993 leg. KA
- AUT Austria, Osttirol, Geiersbichl/ Debanttal, 3 Ex 10.VI.2003 leg. KA
- AUT Austria, Osttirol, Glocknerblick/ Kals am Großglockner NW, 1 Ex 6.VIII.1965 leg. KA
- AUT Austria, Osttirol, Golzentipp/ Obertilliach NNW, 2 Ex 17.VII.2007 leg. KA
- AUT Austria, Osttirol, Gwabl, 1 Ex 3.VII.2009 leg. KA
- AUT Austria, Osttirol, Jochsee/ Obertilliach N, 1 Ex 24.VII.1985 leg. KA
- AUT Austria, Osttirol, Kartitsch NE: Dorfberg, 2 Ex 30.VII.1967 leg. KA
- AUT Austria, Osttirol, Klambrückl/ Lienz S, 1 Ex 18.VII.1978 leg. KA, 1 Ex 1.VII.1993 leg. KA

- AUT Austria, Osttirol, Lavant/ Nikolsdorf NW, 1 Ex 17.VI.1984 leg. KA, 1 Ex 3.VI.1993 leg. KA
- AUT Austria, Osttirol, Lavanter Forchach, 2 Ex 17.VI.2004 leg. KA
- AUT Austria, Osttirol, Lengberg env./ Nikolsdorf NW, 1 Ex 2.VI.1998 leg. KA
- AUT Austria, Osttirol, Lienzer Klause/ Lienz SW, 1 Ex 30.V.2010 leg. KA, 1 Ex 27.VI.2006 leg. KA
- AUT Austria, Osttirol, Lorenzenhof/ St.Johann im Walde E, 1 Ex 16.VII.2009 leg. KA
- AUT Austria, Osttirol, Matrei in Osttirol env., 2 Ex 8.VIII.1991 leg. KA
- AUT Austria, Osttirol, Mittewald an der Drau, 1 Ex 13.VI.2006 leg. KA
- AUT Austria, Osttirol, Nörsach/ Nikolsdorf SE, 1 Ex 8.VI.1969 leg. KA, 1 Ex 26.VII.1985 leg. KA, 1 Ex 29.VI.1988 leg. KA
- AUT Austria, Osttirol, Teischnitztal/ Kals am Großglockner N, 2 Ex 20.VII.1967 leg. KA
- AUT Austria, Vorarlberg, Kreuzjoch (Gauertal), 1 Ex 26.VII.2013 leg. Hiermann U.
- DEU Germany, Bavaria, Erlabrunn/ Wolkenberg, 1 Ex 23.V.1973 leg. Mager H.J.
- DEU Germany, Bavaria, Wiesenfeld/ Mäusberg, 1 Ex 18.VI.1977 leg. Mager H.J.
- HRV Croatia, Lika-Senj, Sveti Juraj-Northern Velebit, 1 Ex 19.VII.2008 leg. LM
- ITA Italy, Friuli, Monte San Simeone, 2 Ex 5.VII.1973 leg. Mager H.J.
- ITA Italy, Südtirol, Brixen/ Tschötscher Heide, 1 Ex 22.V.1965 leg. Peez A., 1 Ex 26.V.1965 leg. Peez A.
- ITA Italy, Südtirol, Leifers, 1 Ex 3.VI.1930 leg. Ratter J.
- ITA Italy, Südtirol, Montiggl, 1 Ex 26.V.1993 leg. HE
- ITA Italy, Trentino, Pomarolo, 1 Ex 20.V.1992 leg. HE, 1 Ex 16.VI.1995 leg. HE
- Rhynocoris cuspidatus* RIBAUT, 1921
- ESP Spain, Extremadura, Villasbuenas de Gata W, 1 Ex 14.VI.1984 leg. Schacht W.
- ESP Spain, Catalonia, Cap de Creus/ Puig dels Bufadors, 2 Ex 14.VII.2015 leg. LM
- FRA France, Languedoc-Roussillon, Banyuls W/ Massane, 1 Ex 25.VI.1954 leg. Weber H.
- FRA France, Provence-Alpes-Côte d'Azur, Pierrefeu-du-Var/ 10 km E, 1 Ex 30.VII.1976 leg. Mager
- Rhynocoris erythropus* (LINNAEUS, 1758)
- ESP Spain, Andalusia, Huetor Santillan S/ Rio Darro, 1 Ex 17.V.1975 leg. Mager & Mühle
- FRA France, Ile-de-France, Bouray, 1 Ex 5.VI.1954 leg. Weber H.
- FRA France, Occitanie, Banyuls-sur-Mer/ Terrails, 1 Ex 13.VI.1954 leg. Weber H.
- FRA France, Provence-Alpes-Cote d'Azur, Collobrieres, 1 Ex 21.VI.2013 leg. LM
- FRA France, Provence-Alpes-Cote d'Azur, Esterel, 1 Ex 1.VI.1980 leg. unknown

- FRA France, Provence-Alpes-Côte d'Azur, La Couronne, 5 Ex 1.VI.1969 leg. Mager
- FRA France, Provence-Alpes-Cote d'Azur, Montrieux Val du Rayol, 1 Ex 30.V.1975 leg. Mager & Mühle
- FRA France, Provence-Alpes-Cote d'Azur, Tourtour, 2 Ex 19.VI.2013 leg. LM
- ITA Italy, Genova, Cavi di Lavagna, 1 Ex 20.V.1976 leg. HA
- ITA Italy, Latium, Picinisco, 4 Ex 17.VII.1968 leg. Mager
- ITA Italy, Latium, Rom W/ Palidoro, 1 Ex 7.VIII.1969 leg. HE
- ITA Italy, Messina, Monte Venere Taormina, 1 Ex 3.V.1961 leg. Schwarz M., 1 Ex 15.V.1961 leg. Schwarz M.
- ITA Italy, Sicily, Taormina/ Monte Ziretto, 1 Ex 1.V.1961 leg. Schwarz M., 1 Ex 8.V.1961 leg. Schwarz M.
- ITA Italy, Trentino, Mori, 1 Ex 23.VII.1959 leg. HA
- ITA Italy, Trentino, Pietramurata, 1 Ex 1.VI.1970 leg. Zschästak A.
- ITA Italy, Verona, Garda, 1 Ex 20.V.1972 leg. Burmann K.
- TUN Tunisia, Kasserine, Kasserine/ 10 km östlich, 1 Ex 10.V.1973 leg. Gusenleitner J.
- TUN Tunisia, Kef, Jendouba/ 15 km südlich, 1 Ex 11.IV.1981 leg. Gusenleitner J.
- TUN Tunisia, Sousse, Sousse, 1 Ex 7.VII.1976 leg. Mager & Mühle
- Rhynocoris flavolimbatus* (JAKOVLEV, 1889)
- TUR Turkey, Mus, Mus, 1 Ex 1.V.1973 leg. Holzschuh, C.
- TUR Turkey, Nigde, Ulukischla (Ulukisla), 2 Ex 23.V.1958 leg. Seidenstücker G.
- Rhynocoris fuscipes* (FABRICIUS, 1787)
- THA Thailand, Chumphon, Chumphon/ Pha To, 1 Ex 27.III.1996 leg. Prudek P.
- Rhynocoris ibericus* KOLENATI, 1857
- IRN Iran, Northern Chorasán, Golestan NP/ Almeh, 3 Ex 22.V.2001 leg. HE
- IRN Iran, Teheran/ Amol Gag Rud, 1 Ex 12.V.2001 leg. HE
- Rhynocoris incertis* (DISTANT, 1903)
- CHN China, Fujian, Fenshui Guan, 1 Ex 26.V.2005 leg. Turna J.
- CHN China, Fujian, Shaowu, 1 Ex 24.V.2005 leg. Turna J.
- CHN China, Fujian, Shiniushan, 1 Ex 1.V.2008 leg. Turna J.
- CHN China, Fujian, Tianbaoyanshan, 1 Ex 20.VI.2007 leg. Turna J.
- CHN China, Fujian, Xinqiao, 1 Ex 4.VI.2008 leg. Turna J.
- CHN China, Hubei, Dabie Shan/ Wujiashan Forest NP, 1 Ex 7.V.2004 leg. Turna J.
- CHN China, Hubei, Shitouzui/ Dabie Shan River Valley, 1 Ex 5.V.2005 leg. Turna J.
- CHN China, Jiangxi, Jiujiang/ Lianhua Forest Parc, 1 Ex 30.V.2004 leg. Turna J.
- CHN China, Qingling/ Taibai Shan Mountains, 1 Ex 1.V.2000 leg. Plutenko A.

CHN China, Shaanxi, Qing Ling Shan Mountains/ Hou Zen Zi, 1 Ex 27.VI.1998 leg. Tryzna M.

CHN China, Shaanxi, Qing Ling Shan Mountains/ Hou Zen Zi, 2 Ex 26.VI.1998 leg. Tryzna M.

CHN China, Sichuan, Li Xian, 1 Ex 16.V.2005 leg. Tryzna M.

CHN China, Sichuan, Wenchuan, 1 Ex 14.V.2005 leg. Tryzna M.

*Rhynocoris iracundus* (PODA, 1761)

AUT Austria, Burgenland, Breitenbrunn, 2 Ex 13.VI.1970 leg. Kapeller R.

AUT Austria, Burgenland, Güssing/ Burgberg, 2 Ex 5.VI.2015 leg. LM

AUT Austria, Burgenland, Hackelsberg/ Jois W, 1 Ex 11.VI.2011 leg. LM

AUT Austria, Burgenland, Markt Neuhodis, 3 Ex 27.V.2005 leg. HE

AUT Austria, Burgenland, Neckenmarkt, 2 Ex 22.VI.2002 leg. HE, 2 Ex 23.V.2008 leg. HE

AUT Austria, Burgenland, Purbach N, 1 Ex 24.V.2015 leg. LM

AUT Austria, Burgenland, Siegendorfer Puszta, 2 Ex 22.VI.2002 leg. HE

AUT Austria, Burgenland, Winden am See, 5 Ex 10.VI.1970 leg. HA

AUT Austria, Carinthia, Hochosterwitz, 1 Ex 7.VII.1959 leg. KA

AUT Austria, Carinthia, Sablatnig Moor/ Eberndorf SE, 1 Ex 20.VII.1989 leg. Kofler A. & Mildner

AUT Austria, Carinthia, Völkermarkt, 1 Ex 20.VII.1988 leg. KA

AUT Austria, Lower Austria, Bodingbach Handhab, 1 Ex 27.VII.1995 leg. Ressler F.

AUT Austria, Lower Austria, Deutsch Altenburg, 2 Ex leg. Kubinyi

AUT Austria, Lower Austria, Dunkelsteinerwald, 1 Ex leg. Kubinyi

AUT Austria, Lower Austria, Gaming E/ Urmannskogel, 1 Ex 26.V.1995 leg. Ressler F.

AUT Austria, Lower Austria, Hochrieß/ Heide, 1 Ex 16.VI.1985 leg. Ressler F.

AUT Austria, Lower Austria, Purgstall an der Erlauf, 1 Ex 27.VI.2001 leg. Ressler F.

AUT Austria, Lower Austria, Weidling, 1 Ex leg. Kubinyi

AUT Austria, Nordtirol, Ahrntal - Innsbruck S, 1 Ex 5.VI.1953 leg. Wohlmann R.

AUT Austria, Nordtirol, Ampass, 1 Ex 15.VII.1956 leg. HA, 1 Ex 16.VI.1961 leg. HA

AUT Austria, Nordtirol, Fließ Trockenhänge, 1 Ex 3.VII.2016 leg. Brandner J.

AUT Austria, Nordtirol, Gärberbach - Innsbruck S, 1 Ex 26.V.1948 leg. PE

AUT Austria, Nordtirol, Innsbruck/ Kranebitten, 1 Ex 13.VII.1939 leg. Ratter J., 2 Ex 3.VI.1949 leg. Ratter J.

AUT Austria, Nordtirol, Innsbruck/ Hötting Sprengerkreuz, 1 Ex 17.V.1948 leg. PE

AUT Austria, Nordtirol, Kaunerberg/ Kauns NE, 1 Ex 11.VI.2005 leg. Knoflach B.

AUT Austria, Nordtirol, Kufstein, 1 Ex 1.VI.1966 leg. HE

- AUT Austria, Nordtirol, Mötztal, 1 Ex 9.VI.1945 leg. PE
- AUT Austria, Nordtirol, Patsch, 1 Ex 8.VI.1953 leg. Wohlmann R.
- AUT Austria, Nordtirol, Sonnenburger Hügel/ Innsbruck S, 1 Ex 29.VI.1948 leg. Ratter J.
- AUT Austria, Nordtirol, Stans/ Schwaz NE, 1 Ex 20.V.1946 leg. Kofler F.J., 1 Ex 17.VI.1947 leg. Kofler F.J.
- AUT Austria, Nordtirol, Stanz/ Landeck NW, 1 Ex 12.VI.1960 leg. HA
- AUT Austria, Nordtirol, Unterberg/ Innsbruck SW, 1 Ex 29.VII.1945 leg. Ratter J., 1 Ex 27.V.1948 leg. PE
- AUT Austria, Nordtirol, Vomperbach/ Schwaz SW, 2 Ex 5.VI.1964 leg. HE
- AUT Austria, Nordtirol, Zirl, 4 Ex 30.V.1957 leg. HA, 1 Ex 23.V.1964 leg. HE, 1 Ex 31.V.1969 leg. HE, 1 Ex 12.VI.2004 leg. Knoflach B.
- AUT Austria, Nordtirol, Zirl Schloßberg/ Zirl N, 4 Ex 23.VII.1970 leg. HE
- AUT Austria, Osttirol, Aguntum / Dölsach W, 1 Ex 13.VI.2005 leg. KA
- AUT Austria, Osttirol, Ainet/ Lienz NW, 1 Ex 2.IX.1971 leg. KA
- AUT Austria, Osttirol, Amlach/ Lienz SW, 2 Ex 21.VII.1954 leg. Ratter J.
- AUT Austria, Osttirol, Assling/ Bichl, 1 Ex 30.VI.2000 leg. KA
- AUT Austria, Osttirol, Bannberg/ Lienz SW, 1 Ex 4.V.1993 leg. KA
- AUT Austria, Osttirol, Gwabl, 1 Ex 3.VII.2009 leg. KA
- AUT Austria, Osttirol, Heinfels/ Sillian NE, 1 Ex 22.VII.1950 leg. Kofler F.J., 1 Ex 6.VIII.1950 leg. Kofler F.J.
- AUT Austria, Osttirol, Lavant Kirchberg, 1 Ex 15.VIII.2004 leg. KA
- AUT Austria, Osttirol, Lavant, 1 Ex 25.VII.2008 leg. KA
- AUT Austria, Osttirol, Leisach Burgfrieden, 1 Ex 10.IX.2004 leg. KA
- AUT Austria, Osttirol, Leisach/ Bahndurchlass, 2 Ex 11.VII.1966 leg. KA
- AUT Austria, Osttirol, Lengberg Schloss, 1 Ex 5.VI.2004 leg. KA
- AUT Austria, Osttirol, Lengberg env./ Nikolsdorf NW, 1 Ex 18.VI.1986 leg. KA, 1 Ex 29.VI.1998 leg. KA, 1 Ex 22.VII.2003 leg. KA, 1 Ex 7.VI.2005 leg. KA
- AUT Austria, Osttirol, Lienz Klösterle, 1 Ex 15.VI.2012 leg. KA, 1 Ex 31.VII.2011 leg. KA
- AUT Austria, Osttirol, Lienz Schleinitzweg, 1 Ex 12.V.2011 leg. KA
- AUT Austria, Osttirol, Lienz SW: Leisach, 1 Ex 27.VII.1987 leg. KA, 1 Ex 22.VI.1988 leg. KA, 1 Ex 15.VII.1995 leg. KA
- AUT Austria, Osttirol, Lienz, 3 Ex 16.VII.1954 leg. Ratter J., 2 Ex 19.VII.1954 leg. Ratter J.
- AUT Austria, Osttirol, Lienz/ Friedhof, 1 Ex 9.VI.2006 leg. KA, 1 Ex 11.VIII.2008 leg. KA
- AUT Austria, Osttirol, Lienz/linker Drauweg, 1 Ex 19.IX.1979 leg. Haidenberger

- AUT Austria, Osttirol, Lienzer Klause/ Lienz SW, 1 Ex 4.VIII.1992 leg. KA
- AUT Austria, Osttirol, Lindsberg/ Nikolsdorf NW, 1 Ex 12.VII.1984 leg. KA
- AUT Austria, Osttirol, Lorenzenhof/ St.Johann im Walde E, 1 Ex 8.VII.1982 leg. KA
- AUT Austria, Osttirol, Mittewald an der Drau, 3 Ex 27.VII.1965 leg. KA
- AUT Austria, Osttirol, Nörsach/ Nikolsdorf SE, 1 Ex 15.VIII.1988 leg. KA
- AUT Austria, Osttirol, Oberleibnig/ St.Johann im Walde NE, 1 Ex 21.VII.1996 leg. KA
- AUT Austria, Osttirol, Oblaß See, 1 Ex 7.VI.2003 leg. KA
- AUT Austria, Osttirol, Peischlachtal, 2 Ex 12.VII.1987 leg. KA
- AUT Austria, Osttirol, Plone/ Nikolsdorf NE, 2 Ex 17.VI.1990 leg. KA
- AUT Austria, Osttirol, Schlaiten E/ Iselau, 1 Ex 18.VI.2006 leg. KA
- AUT Austria, Osttirol, Sillian, 4 Ex 1.VII.1943 leg. Kofler F.J.
- AUT Austria, Osttirol, St.Johann im Walde, 5 Ex 9.VII.1990 leg. KA, 5 Ex 20.VII.1990 leg. KA, 1 Ex 4.VI.1993 leg. KA, 1 Ex 13.VIII.1994 leg. KA
- AUT Austria, Osttirol, Stribach/ Dölsach NW, 1 Ex 19.VIII.2006 leg. KA
- AUT Austria, Osttirol, Thailandl, 1 Ex 29.VI.1978 leg. KA
- AUT Austria, Osttirol, Tristach/ Draufer, 2 Ex 25.VI.2005 leg. KA
- AUT Austria, Osttirol, Tristacher See/ Lienz SE, 1 Ex 5.VI.2011 leg. KA
- AUT Austria, Osttirol, Unterpeischlach/ St.Johann im Walde NW, 1 Ex 13.IX.1986 leg. KA, 1 Ex 24.VI.1990 leg. KA, 1 Ex 9.VI.2004 leg. KA
- AUT Austria, Tirol, Bachweg Seebichl / Lanser-See-Bach, 1 Ex 31.V.2018 leg. Glätzle G.
- AUT Austria, Tirol, Ehemalige Plattner-Schottergrube / Inn, 1 Ex 17.V.2019 leg. Glätzle G., 1 Ex 23.V.2019 leg. Glätzle G.
- AUT Austria, Nordtirol, forest road above Mittenwaldbahn, 25.VI.2016, je 1 Ex 8.VII.2017, 8.VII.2017, 30.VII.2017, 13.V.2018, 25.V.2018, 9.VI.2018, 21.VI.2018, 11.VIII.2018, 23.VIII.2018, 23.V.2019, 3.VIII.2019 leg. Glätzle G.
- AUT Austria, Tirol, forest between L171 and Mittenwaldbahn / Inn, 1 Ex 4.VII.2016 leg. Glätzle G.
- AUT Austria, Tirol, Wirtschaftsweg Sundergraben-Kainzenhüttenalm / Sunderbach, 1 Ex 18.VI.2019 leg. Glätzle G.
- BIH Bosnia-Herzegovina, Sarajevo, 1 Ex 1.VII.1965 leg. Mager
- DEU Germany, Bavaria, Karlstadt/ NSG Rehnützberg-Kalbenstein, 1 Ex 3.VII.1971 leg. Mager
- ESP Spain, Balearic Islands, Mallorca N, Inca N, path to Massanella, 1 Ex 28.IV.1983 leg. Schedl W.
- ESP Spain, Andalusia, Gibraltar, 1 Ex 19.V.1969 leg. Mager
- ESP Spain, Murcia, Sierra de Espuna, 8 km W Alhama, 2 Ex 19.VI.1973 leg. Aistleitner E.
- FRA France, Alpes Maritimes, La Turbie, 1 Ex 18.VII.1957 leg. Burmann K.



- FRA France, Occitanie, NSG Mas Larrieu, 1 Ex 13.VII.2015 leg. LM
- FRA France, Provence-Alpes-Cote d'Azur, Digne, 1 Ex 22.VII.1957 leg. Burmann K.
- FRA France, Provence-Alpes-Côte d'Azur, La Couronne, 2 Ex 1.VI.1969 leg. Mager
- FRA France, Provence-Alpes-Côte d'Azur, Sainte Baume/ Plan de Aups, 1 Ex 6.VII.2015 leg. LM
- GRC Greece, Corfu, Dassia, 1 Ex 1.VIII.2000 leg. Koffler B.
- GRC Greece, Crete, Adele, 1 Ex 14.IV.1986 leg. Egger M.
- GRC Greece, Crete, Akrotiri/ Kloster Gouvernetou env., 2 Ex 5.V.1985 leg. HE
- GRC Greece, Crete, Chersonisos, 1 Ex 10.V.1983 leg. Frieser R.
- GRC Greece, Crete, Gournia, 2 Ex 2.V.2001 leg. Wimmer
- GRC Greece, Crete, Heraklion, 1 Ex 1.IX.1979 leg. Demelt
- GRC Greece, Crete, Lentas, 1 Ex 25.IV.1990 leg. HE
- GRC Greece, Peloponnes, Panachaiko/ Mt. Kalinistra, 1 Ex 1.V.2015 leg. Egger M.
- GRC Greece, Peloponnes, Taigetos/ Neochori/ Agios Nikolaos, 1 Ex 23.IV.2014 leg. Egger M.
- GRC Greece, Rhodos, Faliraki, 1 Ex 20.V.1983 leg. Frieser R.
- HRV Croatia, Split Dalmatia, env. Omis- Cetina/ Kucice, 1 Ex 29.VII.2001 leg. LM
- IRN Iran, Northern Chorasán, Golestan NP/ Almeh, 10 Ex 22.V.2001 leg. HE
- IRN Iran, Northern Chorasán, Golestan NP/ Tangegol, 11 Ex 23.V.2001 leg. HE
- ITA Italy, Basilikata, Passo la Colla, 1 Ex 13.VI.2010 leg. Efetov K. A. & Tarmann G.
- ITA Italy, Friaul-Julisch-Venice, Interneppo/ Monte Festa, 1 Ex 5.VII.1973 leg. Mager
- ITA Italy, Latium, Picinisco, 5 Ex 7.VII.1968 leg. Mager
- ITA Italy, Südtirol, Bozen/ Haselburg, 3 Ex 26.V.1953 leg. Wohlmann R.
- ITA Italy, Südtirol, Bozen/ Rentsch, 1 Ex 4.VI.1930 leg. Ratter J., 1 Ex 5.VI.1930 leg. Ratter J., 2 Ex 6.VI.1930 leg. Ratter J.
- ITA Italy, Südtirol, Kardaun, 1 Ex 27.V.1954 leg. HA
- ITA Italy, Südtirol, Leifers, 3 Ex 3.VI.1930 leg. Ratter J., 1 Ex 25.V.1953 leg. Ratter J., 1 Ex 16.VI.1954 leg. HA, 4 Ex 26.VI.1954 leg. HA, 1 Ex 12.V.1964 leg. Peez A.
- ITA Italy, Südtirol, Meran, 1 Ex 20.V.1950 leg. Wohlmann R., 1 Ex 26.V.1950 leg. Wohlmann R.
- ITA Italy, Südtirol, Sigmundskron/ Bozen SW, 1 Ex 1.VI.1930 leg. Ratter J.
- ITA Italy, Südtirol, St.Peter = St.Pietro Villnöss, 3 Ex 20.V.1955 leg. HA
- ITA Italy, Südtirol, Taufers, 1 Ex 5.VI.1964 leg. HE
- ITA Italy, Trentino, Pomarolo, 1 Ex 19.VII.1995 leg. HE
- ITA Italy, Trentino-Südtirol, Castelfeder, 1 Ex 22.VII.1954 leg. HA
- SVN Slovenia, Slovenia, Orlek/ Trieste NE, 5 Ex 29.V.1993 leg. KA
- UZB Uzbekistan, Fargona, Chamsaabad (Shohimardon), 1 Ex 14.VII.1984 leg. Bautsen



*Rhynocoris marginatus* (FABRICIUS, 1781)

PAK Pakistan, Tarbela, 1 Ex 15.X.1971 leg. HE

*Rhynocoris marginellus* (FABRICIUS, 1803)

MYS Malaysia, Kelantan, Kelantan/ between Kampong Raja and Gua Musang, 1 Ex 1.IV.2006 leg. Cechovsky P.

MYS Malaysia, Pahang, Endau Rompin NP, 3 Ex 9.IV.2008 leg. Cechovsky P.

*Rhynocoris mendicus* (STÅL, 1867)

MYS Malaysia, Pahang, Endau Rompin NP, 1 Ex 9.IV.2008 leg. Cechovsky P.

*Rhynocoris punctiventris* (HERRICH–SCHAEFFER, 1846)

MKD Macedonia, Epirus and Western Macedonia, Vegoritida-See, 1 Ex 21.VII.1976 leg. Schedl W.

TUR Turkey, Aydin, Kusadasi, 1 Ex 13.VI.1973 leg. Kippenberg H.

TUR Turkey, Balikesir, Gönen, 1 Ex 9.VI.1958 leg. Wellschmied

TUR Turkey, Yozgat, Sorgun, 4 Ex 1.VI.1984 leg. Frieser R.

*Rhynocoris rathjensi* MILLER, 1954

YEM Yemen, Capital Municipality, Sanaa env./ Wadi Dhar, 1 Ex 31.V.1987 leg. Mühle H., 1 Ex 25.II.1989 leg. HE

YEM Yemen, Raymah Governorate, Bayt al Main/ Maswar Mountains, 1 Ex 3.IV.1996 leg. Erber W.

*Rhynocoris rubricus* (GERMAR, 1814)

ITA Italy, Udine, San Daniele del Friuli, 1 Ex 23.V.1994 leg. KA

### **Genus *Scipinia* STÅL, 1861**

*Scipinia horrida* (STÅL, 1860)

TWN Taiwan, Shanmei, 1 Ex 23.V.1977 leg. Klapperich J.

### **Genus *Sclomina* STÅL, 1861**

*Sclomina erinacea* STÅL, 1861

CHN China, Hubei, Dahongshan, 1 Ex 30.IV.2005 leg. Turna J.

CHN China, Hunan, Wuling Shan/ Zhangjiajie, 2 Ex 4.VII.2003 leg. Turna J.

TWN Taiwan, Taiwan, Fenchihu, 3 Ex 9.IV.1977 leg. Klapperich J., 2 Ex 15.IV.1977 leg. Klapperich J., 2 Ex 3.V.1977 leg. Klapperich J., 1 Ex 14.V.1977 leg. Klapperich J., 4 Ex 25.V.1977 leg. Klapperich J.

### **Genus *Sphedanolestes* STÅL, 1867**

*Sphedanolestes albipilosus* ISHIKAWA, CAI & TOMOKUNI, 2007

TWN Taiwan, Taiwan, Fenchihu, 2 Ex 3.V.1977 leg. Klapperich J., 4 Ex 14.V.1977 leg. Klapperich J., 2 Ex 25.V.1977 leg. Klapperich J.

*Sphedanolestes gularis* HSIAO, 1979

- CHN China, Fujian, Baishi Feng, 2 Ex 2.VI.2008 leg. Turna J.  
CHN China, Fujian, Fenshui Guan, 1 Ex 26.V.2005 leg. Turna J.  
CHN China, Fujian, Shiniushan, 1 Ex 28.V.2008 leg. Turna J.  
CHN China, Fujian, Ziyungdongshan, 4 Ex 31.V.2008 leg. Turna J.  
CHN China, Hubei, Dabie Shan/ Wujiashan Forest NP, 16 Ex 17.VI.2003 leg. Turna J., 2 Ex 18.VII.2003 leg. Turna J.  
CHN China, Hubei, Enshi, 1 Ex 2.VII.2003 leg. Turna J.  
CHN China, Hubei, Jiugongshan Forest Park, 4 Ex 3.VI.2002 leg. Turna J.  
CHN China, Hubei, Longmenhe Forest Park, 1 Ex 9.VI.2002 leg. Turna J.  
CHN China, Hubei, Muyuping, 3 Ex 27.VI.2000 leg. Turna J., 2 Ex 8.VI.2002 leg. Turna J., 1 Ex 20.VI.2003 leg. Turna J., 1 Ex 12.VII.2003 leg. Turna J.,  
CHN China, Hubei, Tiechanghuhang, 1 Ex 27.VI.2003 leg. Turna J.  
CHN China, Hubei, Tongshan, 1 Ex 7.VI.2004 leg. Turna J.  
CHN China, Hunan, Wuling Shan/ Zhangjiajie, 1 Ex 4.VII.2003 leg. Turna J.  
CHN China, Shaanxi, Daba Shan, 1 Ex 1.VI.2000 leg. Turna J.  
CHN China, Shaanxi, Langao/ Daba Shan pass, 2 Ex 29.VI.2001 leg. Turna J.  
CHN China, Sichuan, Baoxing, 3 Ex 12.VII.1995 leg. Tryzna M.  
CHN China, Sichuan, Gongga Shan Mountains, 2 Ex 28.VI.2004 leg. Plutenko A.  
CHN China, Sichuan, Huatan, 2 Ex 16.VII.1995 leg. Tryzna M.  
CHN China, Sichuan, Jiulonggou, 8 Ex 27.VI.1995 leg. Tryzna M.  
CHN China, Sichuan, Moxi, 139 Ex 15.VI.2006 leg. Tryzna M.  
CHN China, Sichuan, Wanyuan to Chengkou, 2 Ex 22.VI.2000 leg. Turna J.

*Sphedanolestes impressicollis* STÅL, 1861

- CHN China, Anhui, Tianzhushan, 1 Ex 11.V.2004 leg. Turna J.  
CHN China, Fujian, Fengshui Guan, 5 Ex 1.VI.2004 leg. Turna J.  
CHN China, Fujian, Fenshui Guan, 3 Ex 26.V.2005 leg. Turna J.  
CHN China, Fujian, Mangdangyang, 1 Ex 22.VII.2006 leg. Turna J.  
CHN China, Fujian, Shaowu, 1 Ex 24.V.2005 leg. Turna J.  
CHN China, Fujian, Taining, 1 Ex 28.V.2005 leg. Turna J.  
CHN China, Fujian, Tianbaoyanshan, 4 Ex 20.VI.2007 leg. Turna J., 1 Ex 12.VII.2007 leg. Turna J.  
CHN China, Fujian, Wuyi Shan, 3 Ex 6.V.2005 leg. Turna J., 1 Ex 25.V.2005 leg. Turna J.

- CHN China, Fujian, Xinqiao, 4 Ex 29.V.2005 leg. Turna J., 1 Ex 10.V.2005 leg. Turna J., 2 Ex 4.VI.2008 leg. Turna J.
- CHN China, Fujian, Yong An, 1 Ex 31.V.2008 leg. Turna J.
- CHN China, Fujian, Ziyungdongshan, 1 Ex 31.V.2008 leg. Turna J.
- CHN China, Hebei, Qinglong, 1 Ex 17.VI.2001 leg. Turna J.
- CHN China, Hubei, Dabie Shan/ Wujiashan Forest NP, 2 Ex 18.VII.2003 leg. Turna J., 1 Ex 7.V.2004 leg. Turna J.
- CHN China, Hubei, Enshi, 2 Ex 2.VII.2003 leg. Turna J.
- CHN China, Hubei, Jiugongshan Forest Park, 2 Ex 3.V.2002 leg. Turna J.
- CHN China, Hubei, Longmenhe Forest Park, 2 Ex 9.VI.2002 leg. Turna J.
- CHN China, Hubei, Muyuping, 1 Ex 20.VI.2003 leg. Turna J., 1 Ex 27.VI.2000 leg. Turna J.
- CHN China, Hunan, Wuling Shan/ Zhangjiajie, 6 Ex 4.VII.2003 leg. Turna J.
- CHN China, Qingling/ Taibai Shan-Mountains, 1 Ex 1.V.2000 leg. Plutenko A.
- CHN China, Shaanxi, Daba Shan, 1 Ex 29.VI.2001 leg. Turna J.
- CHN China, Sichuan, Baoxing, 1 Ex 12.VII.1995 leg. Tryzna M.
- CHN China, Sichuan, Gongga Shan Mountains, 1 Ex 28.VI.2004 leg. Plutenko A.
- CHN China, Sichuan, Moxi, 10 Ex 15.VI.2006 leg. Tryzna M.
- CHN China, Sichuan, Wanyuan to Chengkou, 2 Ex 22.VI.2000 leg. Turna J.
- MYS Malaysia, Pahang, Endau Rompin NP, 4 Ex 9.IV.2008 leg. Cechovsky P.
- PRK Nordkorea, Hwanghae-namdo, Sujangsan bei Hedzu, 2 Ex 4.VI.1975 leg. Josifov M.
- PRK Nordkorea, P'yongan-namdo, Rjongaksan, 2 Ex 14.VI.1975 leg. Josifov M.

*Sphedanolestes pulchellus* (KLUG, 1830)

- CYP Cyprus, Troodos Gebirge, Platres, 2 Ex 28.V.1995 leg. Wimmer
- GRC Greece, Egeo, Profitis Ilias, 1 Ex 27.V.1979 leg. Rausch H.
- TUR Turkey, Ankara, Ankara/ Baraj, 1 Ex 24.VI.1970 leg. Seidenstücker G.
- TUR Turkey, Antalya, Alanya, 1 Ex 28.V.1968 leg. Holzschuh, C.
- TUR Turkey, Antalya, Altinyaka, 1 Ex 1.VI.1985 leg. HE
- TUR Turkey, Balikesir, Canakkale/ Evciler, 2 Ex 16.VI.2001 leg. Rausch H.

*Sphedanolestes pulcher pulcher* SCHOUTEDEN, 1906

- YEM Yemen, Capital Municipality, Sanaa env./ Wadi Dhar, 1 Ex 31.V.1987 leg. Mühle H.

*Sphedanolestes sanguineus* (FABRICIUS, 1794)

- FRA France, Occitanie, Banyuls-sur-Mer/ Mas Xatart, 1 Ex 10.VII.1978 leg. Pericart J.
- TUN Tunisia, Jendouba, Ain-Draham, 3 Ex 21.VI.1976 leg. Mager & Mühle

**Genus *Sycanus* AMYOT & SERVILLE, 1843***Sycanus falleni* STÅL, 1863MYS Malaysia, Kelantan, Kelantan/ between Kampong Raja and Gua Musang, 2 Ex  
1.IV.2006 leg. Cechovsky P.*Sycanus minor* HSIAO, 1979

TWN Taiwan, Shanmei, 1 Ex 23.V.1977 leg. Klapperich J.

**Genus *Vachiria* STÅL, 1859***Vachiria deserta* (BECKER, 1867)GRC Greece, Decentralized Administration of the Aegean, Skala Kallonis, 2 Ex 8. X. 2014  
leg. Simon*Vachiria natolica* STÅL, 1859EGY Egypt, Gouvernement Al-Ismailiyya, Fayed, 1 Ex 1.VI.1942 leg. Priesner H., 1 Ex  
1. X. 1942 leg. Priesner H.

ESP Spain, Valenciana, Salinas, 1 Ex 1. X. 1973 leg. Sauleda N.

LBY Libya, Murzuk, Murzuk/ Tesawa, 2 Ex 10. XI. 2003 leg. HE

SAU Saudi Arabia, Asch-Scharqiyya, Al Chubar (Khobar), 1 Ex 4. IX. 1982 leg. HE

*Vachiria prolixa* KIRITSHENKO, 1925

IRN Iran, Golestan, Golestan/ Lake Ala Gol, 2 Ex 16.V.2001 leg. HE

**Genus *Velinus* STÅL, 1866***Velinus annulatus* DISTANT, 1879

MYS Malaysia, Pahang, Endau Rompin NP, 4 Ex 9. IV. 2008 leg. Cechovsky P.

*Velinus nigrigenus* AMYOT & SERVILLE, 1843 exld

MYS Malaysia, Johor, Johor/ Kota Tinggi/ 30 km N, 22 Ex 7. IV. 2007 leg. Cechovsky P.

MYS Malaysia, Kelantan, Kelantan/ between Kampong Raja and Gua Musang, 2 Ex  
1. IV. 2006 leg. Cechovsky P.

MYS Malaysia, Kelantan, Tanah Rata/ Tanah Kerajaan, 1 Ex 12. IV. 2007 leg. Cechovsky P.

MYS Malaysia, Pahang, Endau Rompin NP, 71 Ex 9. IV. 2008 leg. Cechovsky P.

**Genus *Zelus* FABRICIUS, 1803***Zelus armillatus* (LEPELETIER & SERVILLE, 1825) exldCRI Costa Rica, San Jose/ Aserri, San José, 2 Ex 5. VIII. 2014, 1 Ex 29. VII. 2014 leg.  
local collector

**Systematic catalogue of included Reduviidae**

Illustrated species are marked with\*

**Subfamily Ectotrichodiinae AMYOT & SERVILLE, 1843****Genus *Adrania* STÅL, 1863***Adrania macra* STÅL, 1863 exld**Genus *Gardena* DOHRN, 1860***Gardena insignis* HORVÁTH, 1887 \***Genus *Stenolemus* SIGNORET, 1858***Stenolemus alikakay* RÉDEI & TSAI, 2010*Stenolemus bogdanovii* OSHANIN, 1871*Stenolemus novaki* HORVÁTH, 1888**Genus *Ploiaria* SCOPOLI, 1786***Ploiaria chilensis* (PHILIPPI, 1862)*Ploiaria domestica* SCOPOLI, 1786**Genus *Tinna* DOHRN, 1859***Tinna zonata* MILLER, 1954**Genus *Ischnonyctes* STÅL, 1874***Ischnonyctes barbarus* (LUCAS, 1849) \***Genus *Metapterus* A. COSTA, 1862***Metapterus linearis* A. COSTA, 1862**Genus *Schidium* BERGROTH, 1816***Schidium confine* WYGODZINSKY, 1966**Genus *Empicoris* WOLFF, 1811***Empicoris baerensprungi* (DOHRN, 1862) \**Empicoris brevispinus* (PUTON, 1889)*Empicoris culiciformis* (DE GEER, 1773)*Empicoris mediterraneus* HOBERLANDT, 1956*Empicoris rubromaculatus* (BLACKBURN, 1889)*Empicoris vagabundus* (LINNAEUS, 1758)**Subfamily Holoptiliinae AMYOT & SERVILLE, 1843****Genus *Ptilocnemus* WESTWOOD, 1840***Ptilocnemus femoralis* HORVÁTH, 1902 EXLD \***Subfamily Elasmodeminae LETHIERRY & SEVERIN, 1860****Genus *Elasmodema* STÅL, 1860***Elasmodema erichsoni* STÅL, 1860 exld \***Subfamily Peiratinae AMYOT & SERVILLE, 1843****Genus *Ectomocoris* MAYR, 1865***Ectomocoris chiragra* (FABRICIUS, 1803)*Ectomocoris ululans* (ROSSI, 1790) \***Genus *Peirates* SERVILLE, 1831***Peirates hybridus* (SCOPOLI, 1763)*Peirates strepitans* RAMBUR, 1839*Peirates stridulus* (FABRICIUS, 1787)

**Genus *Sirthenea* SPINOLA, 1837***Sirthenea dimidiata* HORVÁTH, 1911*Sirthenea flavipes* (STÅL, 1855) exld**Genus *Rasahus* AMYOT & SERVILLE, 1843***Rasahus hamatus* (FABRICIUS, 1781) exld**Subfamily Phymatinae LAPORTE, 1832****Genus *Amblythyreus* WESTWOOD, 1842***Amblythyreus stalii* HANDLIRSCH, 1897 exld**Genus *Lophoscutus* KORMILEV, 1951***Lophoscutus lepidus* (STÅL, 1862) exld*Lophoscutus prebelensis* (FABRICIUS, 1803) exld**Genus *Carcinocoris* HANDLIRSCH 1897***Carcinocoris binghami* (SHARP, 1897) \***Genus *Chelocoris* BIANCHI, 1899***Chelocoris yunnanus* HSIAO & LIU, 1979**Genus *Phymata* LATREILLE, 1802***Phymata crassipes* (FABRICIUS, 1775)*Phymata monstrosa* (FABRICIUS, 1794) \**Phymata americana* MELIN, 1830 exld*Phymata armata* HANDLIRSCH, 1897 exld*Phymata barberi* KORMILEV, 1962 exld*Phymata fasciata* GRAY, 1832 exld*Phymata granulosa* HANDLIRSCH, 1897 exld*Phymata venezuelana* KORMILEV, 1950 exld**Subfamily Reduviinae LATREILLE, 1807****Genus *Acanthaspis* AMYOT & SERVILLE, 1843***Acanthaspis fuscinervis* HSIAO, 1976*Acanthaspis picta* HSIAO, 1976*Acanthaspis flavovaria* (HAHN, 1834) exld*Acanthaspis gulo* STÅL, 1863 exld**Genus *Brachytonus* CHINA, 1925***Brachytonus nigripes* HSIAO, 1976**Genus *Holotrichius* BURMEISTER, 1835***Holotrichius bergrothi* REUTER, 1891*Holotrichius denudatus* A. COSTA, 1843*Holotrichius reuterianus* DISPONS, 1961*Holotrichius rotundatus* STÅL, 1874*Holotrichius tenebrosus* BURMEISTER, 1835 \*\***Genus *Pasira* STÅL, 1859***Pasira basiptera* STÅL, 1859**Genus *Reduvius* FABRICIUS, 1775***Reduvius bidens* LINNAVUORI, 1964*Reduvius cf. elegans* (JAKOVLEV, 1885)*Reduvius disciger* HORVATH, 1896*Reduvius fasciatus fasciatus* REUTER, 1887*Reduvius froeschneri* CAI & SHEN, 1997

*Reduvius insularis* LINNAVUORI, 1964  
*Reduvius komarovii* (JAKOVLEV, 1885)  
*Reduvius lateralis* HSIAO, 1976  
*Reduvius pallipes* KLUG, 1830  
*Reduvius nigritus* MOULET, 2020 (Holotype)  
*Reduvius personatus* (LINNAEUS, 1758) \*  
*Reduvius tabidus* KLUG, 1830  
*Reduvius testaceus* (HERRICH–SCHAEFFER, 1845)

**Genus *Tapeinus* LAPORTE, 1833**

*Tapeinus fuscipennis* (STÅL, 1874)

**Subfamily Cetherinae JEANNEL, 1919**

**Genus *Cethera* AMYOT & SERVILLE, 1843**

*Cethera musiva* (GERMAR, 1837) exld

**Subfamily Saicinae STÅL, 1859**

**Genus *Gallobelgicus* DISTANT, 1906**

*Gallobelgicus heissi* RÉDEI & TSAI, 2009 (Paratypes)

**Genus *Polytoxus* SPINOLA, 1850**

*Polytoxus siculus* (A. COSTA, 1842) \*

**Subfamily Stenopodainae AMYOT & SERVILLE, 1843**

**Genus *Oncocephalus* KLUG, 1830**

*Oncocephalus acutangulus* REUTER, 1882 \*

*Oncocephalus gutturosus* DISPONS, 1965

*Oncocephalus cf. impictipes* JAKOVLEV, 1885

*Oncocephalus milleri* LINDBERG, 1953

*Oncocephalus obsoletus* KLUG, 1830

*Oncocephalus pilicornis* REUTER, 1882

*Oncocephalus squalidus* (ROSSI, 1790)

*Oncocephalus thoracicus* FIEBER, 1861

**Genus *Pygolampis* GERMAR, 1817**

*Pygolampis bidentata* (GOEZE, 1778) \*

**Genus *Stirogaster* JAKOVLEV, 1874**

*Stirogaster desertorum* HORVATH, 1913

*Stirogaster fausti* JAKOVLEV, 1874

**Genus *Thodelmus* STÅL, 1859**

*Thodelmus falleni* STÅL, 1859 exld

**Subfamily Triatominae JEANNEL, 1919**

**Genus *Triatoma* LAPORTE, 1832**

*Triatoma rubrofasciata* (DE GEER, 1773)

*Triatoma migrans* BREDDIN, 1903 exld \*

**Subfamily Harpactorinae AMYOT & SERVILLE, 1843**

**Genus *Agyrius* STÅL, 1863**

*Agyrius podagricus* STÅL, 1863 exld

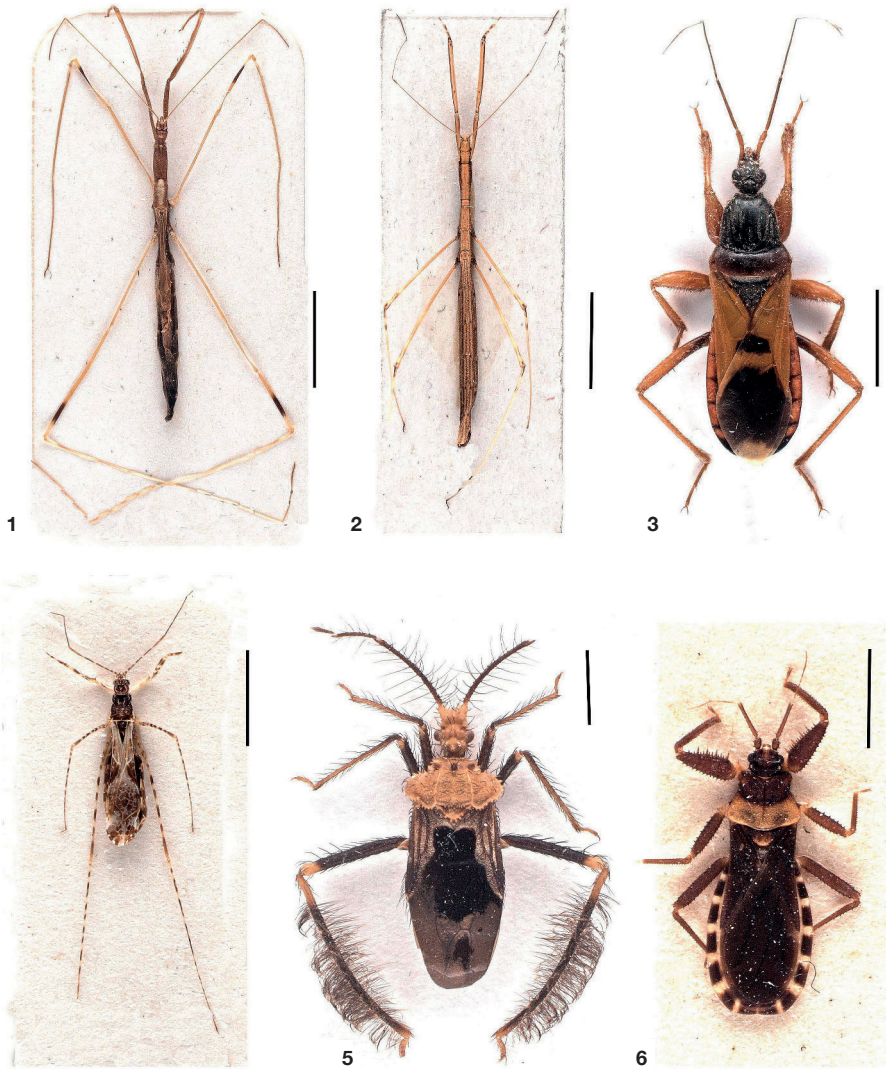
**Genus *Amphibolus* KLUG, 1830**

*Amphibolus beduinus* PUTON, 1881

**Genus *Biasticus* STÅL, 1867***Biasticus flavinotus* (MATSUMARA, 1913) exld**Genus *Brassivola* DISTANT, 1904***Brassivola hystrix* DISTANT, 1904 exld**Genus *Callistodema* REUTER, 1890***Callistodema fasciata* (KOLENATI, 1857)**Genus *Coranus* CURTIS, 1833***Coranus aegyptius* (FABRICIUS, 1775)*Coranus angulatus* STÅL, 1874*Coranus griseus* (ROSSI, 1790) \**Coranus kerzhneri* P.V. PUTSHKOV, 1982*Coranus kiritshenkoi* BERGEVIN, 1932*Coranus laticeps* WAGNER, 1952*Coranus niger* (RAMBUR, 1840)*Coranus spiniscutis* REUTER, 1881*Coranus subapterus* (DE GEER, 1773)*Coranus woodroffeii* V. P. PUTSHKOV, 1982**Genus *Cosmolestes* STÅL, 1867***Cosmolestes pictus* (KLUG, 1830) \**Cosmolestes picticeps* (STÅL, 1859) exld \***Genus *Cydnocoris* STÅL, 1866***Cydnocoris fasciatus* REUTER, 1881*Cydnocoris hyalinus* MILLER, 1955**Genus *Nagusta* STÅL, 1859***Nagusta goedelii* (KOLENATI, 1857) \**Nagusta simonis* PUTON, 1890**Genus *Panthous* STÅL, 1863***Panthous bimaculatus* DISTANT, 1903 exld*Panthous daedalus* STÅL, 1863 exld \***Genus *Polidius* STÅL, 1858***Polidius armatissimus* STÅL, 1859 \***Genus *Repipta* STÅL, 1859***Repipta annulipes* BARBER, 1925 exld**Genus *Rhapactor* PUTON, 1887***Rhapactor biparticeps* PUTON, 1887**Genus *Ribirbus* STÅL, 1861***Ribirbus trochantericus* STÅL, 1861**Genus *Rhynocoris* HAHN, 1833***Rhynocoris annulatus* (LINNAEUS, 1758)*Rhynocoris cuspidatus* RIBAUT, 1921*Rhynocoris erythropus* (LINNAEUS, 1758)*Rhynocoris flavolimbatus* (JAKOVLEV, 1889)*Rhynocoris fuscipes* (FABRICIUS, 1787)*Rhynocoris ibericus* KOLENATI, 1857*Rhynocoris incertis* (DISTANT, 1903)*Rhynocoris iracundus* (PODA, 1761) \**Rhynocoris marginatus* (FABRICIUS, 1781)*Rhynocoris marginellus* (FABRICIUS, 1803)

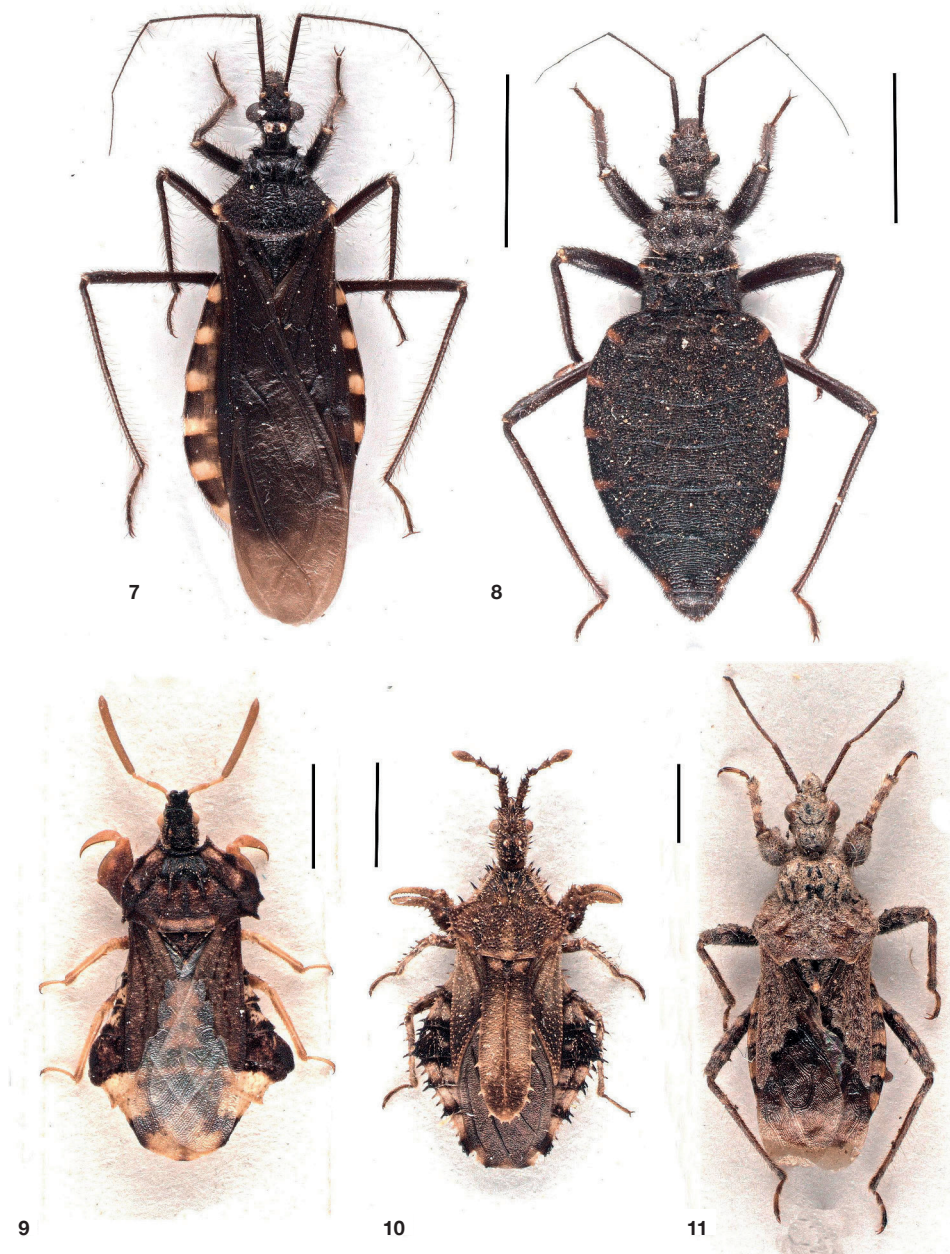


- Rhynocoris mendicus* (STÅL, 1867)  
*Rhynocoris punctiventris* (HERRICH–SCHAEFFER, 1846)  
*Rhynocoris rathjensi* MILLER, 1954  
*Rhynocoris rubricus* (GERMAR, 1814)  
**Genus *Scipinia* STÅL, 1861**  
*Scipinia horrida* (STÅL, 1860)  
**Genus *Sclomina* STÅL, 1861**  
*Sclomina erinacea* STÅL, 1861  
**Genus *Sphedanolestes* STÅL, 1867**  
*Sphedanolestes albipilosus* ISHIKAWA, CAI & TOMOKUNI, 2007  
*Sphedanolestes gularis* HSIAO, 1979  
*Sphedanolestes impressicollis* STÅL, 1861  
*Sphedanolestes pulchellus* (KLUG, 1830) \*  
*Sphedanolestes pulcher pulcher* SCHOUTEDEN, 1906  
*Sphedanolestes sanguineus* (FABRICIUS, 1794)  
**Genus *Sycanus* AMYOT & SERVILLE, 1843**  
*Sycanus falleni* STÅL, 1863  
*Sycanus minor* HSIAO, 1979  
**Genus *Vachiria* STÅL, 1859**  
*Vachiria deserta* (BECKER, 1867)  
*Vachiria natolica* STÅL, 1859  
*Vachiria prolixa* KIRITSHENKO, 1925  
**Genus *Velinus* STÅL, 1866**  
*Velinus annulatus* DISTANT, 1879  
*Velinus nigrigenus* AMYOT & SERVILLE, 1843 exld  
**Genus *Zelus* FABRICIUS, 1803**  
*Zelus armillatus* (LEPELETIER & SERVILLE, 1825) exld \*



**Fig. 1:** *Gardena insignis* ♀ (ITA Lombardia). **Fig. 2:** *Ischnonyctes barbarus* ♂ (ITA Lazio). **Fig. 3:** *Ectomocoris ululans* ♂ (IRN Khorasan). **Fig. 4:** *Empicoris baerensprungi* ♀ (AUT Nordtirol). **Fig. 5:** *Ptilocnemus femoralis* ♂ (AUS Queensland). **Fig. 6:** *Elasmodema erichsoni* ♀ (ARG Misiones). Alle Fotos © A. Eckelt

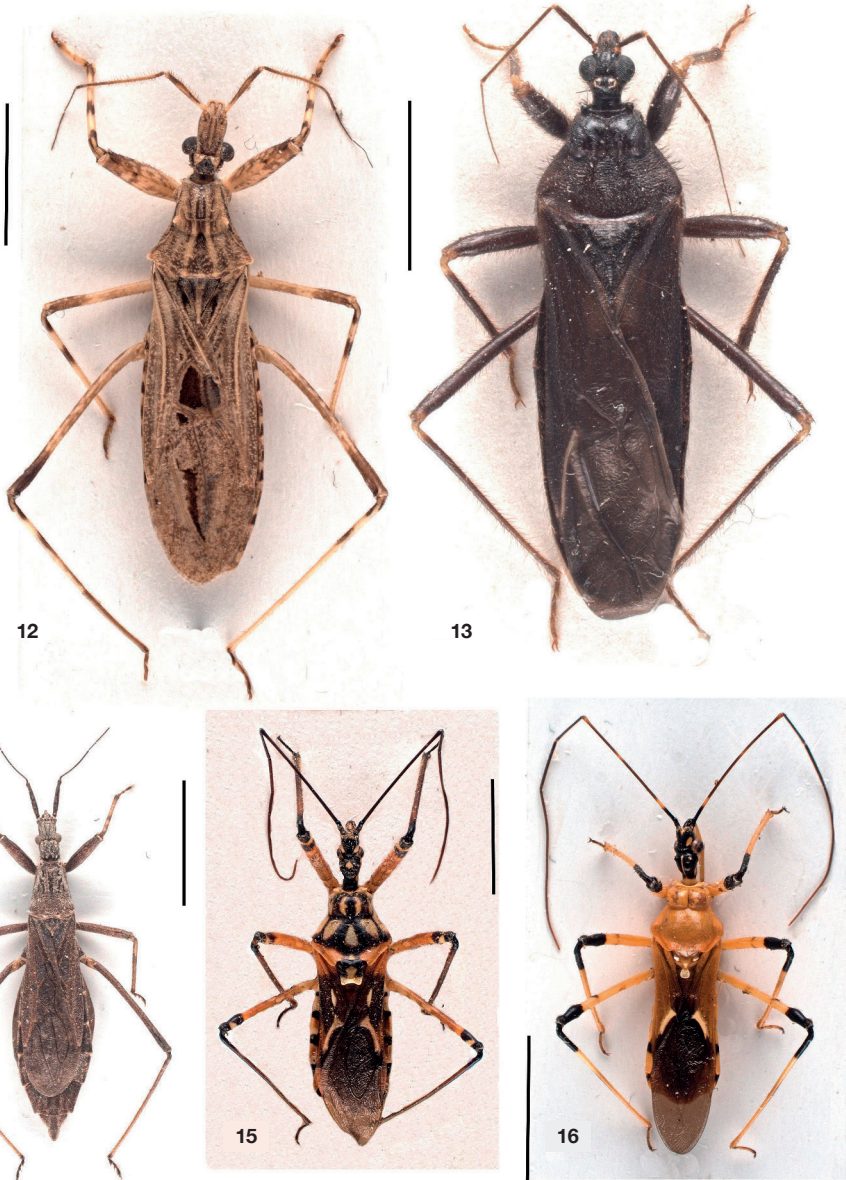
**Maßstäbe:** Fig. 1-3 = 5mm, Fig. 4-6 = 2mm



**Fig.7:** *Holotrichius tenebrosus* ♂ (GRC Peloponnes). **Fig.8:** *Holotrichius tenebrosus* ♀ (GRC Peloponnes). **Fig.9:** *Phymata monstrosa* ♂ (ESP Andalusia). **Fig.10:** *Carcinocoris binghami* ♀ (CHN Yunnan). **Fig.11:** *Coranus griseus* ♂ (ITA Südtirol). Alle Fotos © A. Eckelt

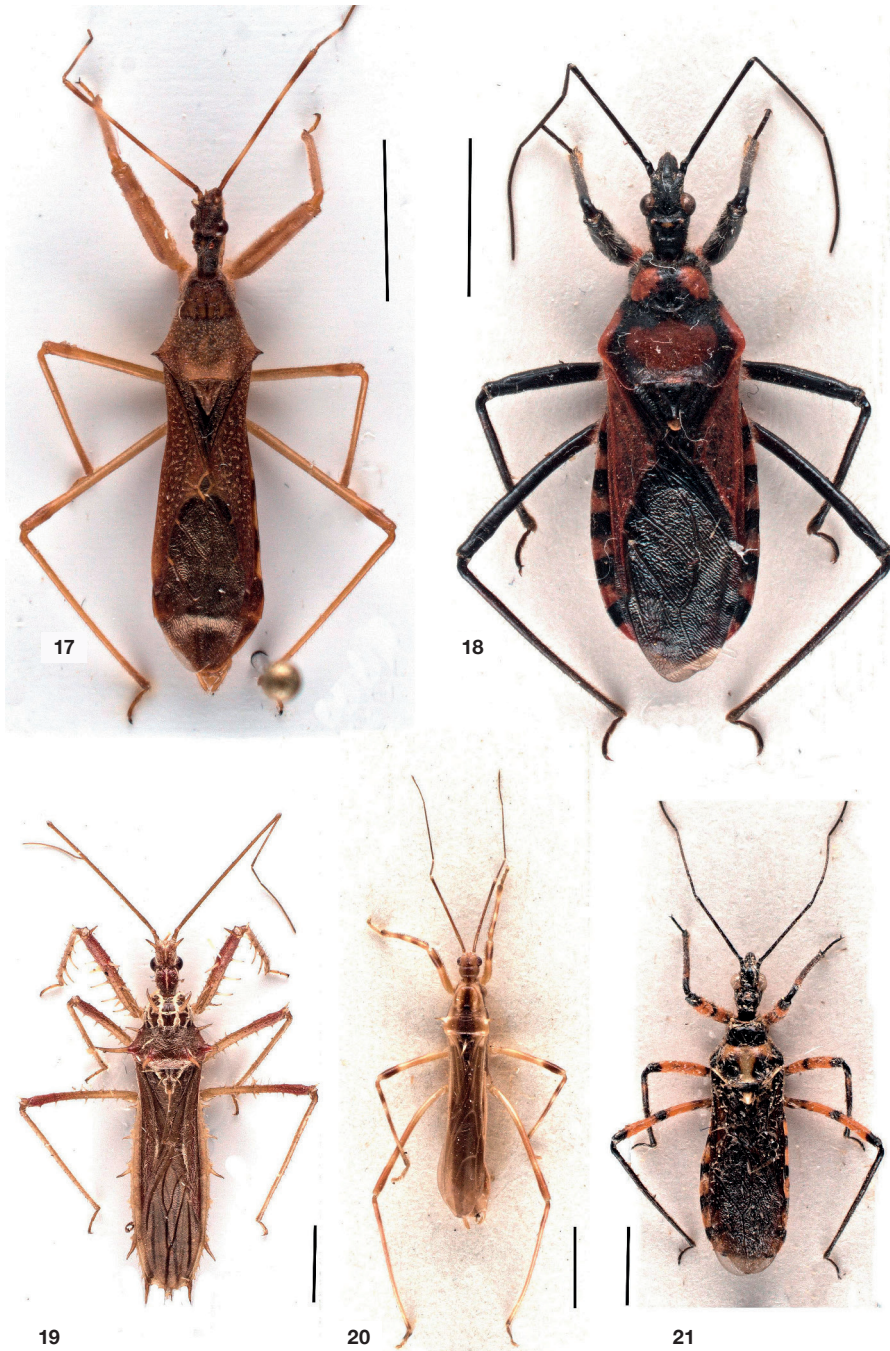
**Maßstäbe:** Fig.7–8 = 5 mm, Fig.9–11 = 2 mm





**Fig. 12:** *Oncocephalus acutangulus* ♂ (IRN Mazanderan). **Fig. 13:** *Reduvius personatus* ♂ (AUT Nordtirol). **Fig. 14:** *Pygolampis bidentata* ♀ (AUT Burgenland). **Fig. 15:** *Cosmolestes pictus* ♀ (SAU Jizan). **Fig. 16:** *Cosmolestes picticeps* ♂ (MYS Johor). Alle Fotos © A. Eckelt

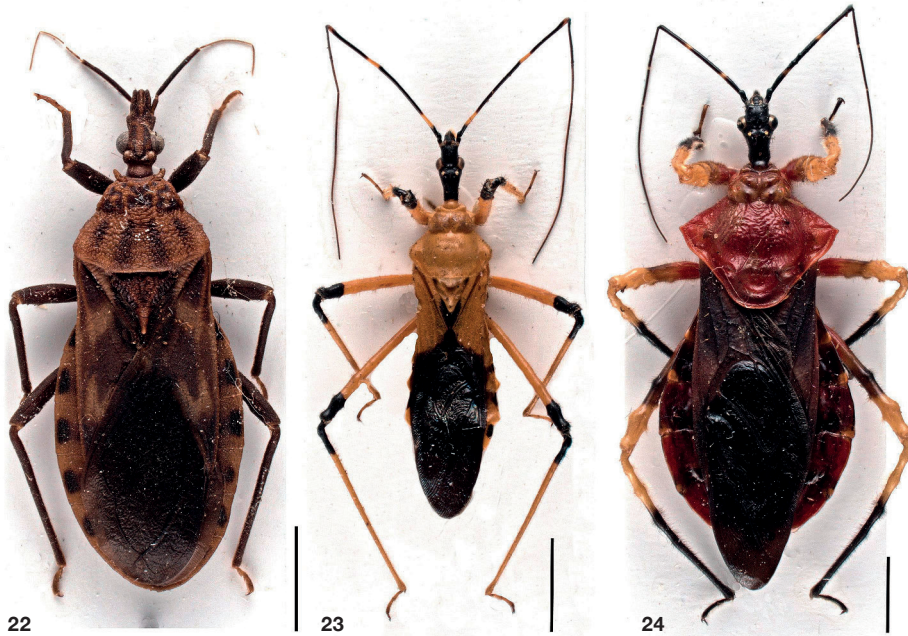
**Maßstäbe:** Fig. 12–16 = 5mm



**Fig. 17:** *Nagusta goedeli* ♂ (ITA Toscana). **Fig. 18:** *Rhynocoris iracundus* ♂ (IRN Golestan). **Fig. 19:** *Polidius armatissimus* ♀ (MSY Pahang). **Fig. 20:** *Polytoxus siculus* ♂ (ITA Sardinia). **Fig. 21:** *Sphedanolestes pulchellus* ♀ (CYP Troodos). Alle Fotos © A. Eckelt

**Maßstäbe:** Fig. 17–18 = 5mm, Fig. 19–21 = 2mm





**Fig. 22:** *Triatoma migrans* ♀ (IND Sumatra). **Fig. 23:** *Panthous daedalus* ♀ (MYS Johor). **Fig. 24:** *Velinus nigrigenus* ♂ (MYS Kelantan). Alle Fotos © A. Eckelt

**Maßstäbe:** Fig. 22–24 = 5 mm

## Acknowledgements

Ernst Heiss thanks his friends and colleagues who generously donated voucher specimens or by-catches, thus considerably contributing to the present size of the collection. The authors are grateful to the editors of *Entomologica Austriaca* Martin Schebeck, Patrick Krapf and Simon Vitecek for editing this article and the Austrian Entomological Society (Österreichische Entomologische Gesellschaft, ÖEG) for maintaining this journal.

## References

- AUKEMA B. & RIEGER C. 1995 (eds.): Catalogue of the Heteroptera of the Palaearctic Region. Vol. 1 – The Netherlands Entomological Society, Amsterdam, 222 pp.
- AUKEMA B., RIEGER C. & RABITSCH, W. 2013 (eds.): Catalogue of the Heteroptera of the Palaearctic Region. Vol. 6 – The Netherlands Entomological Society, Amsterdam, Supplement: 48–55.
- HEISS E., ECKELT A., LEDERWASCH M. & UNTERASINGER R. 2021a: Die Heteropterensammlung Ernst Heiss im Tiroler Landesmuseum Ferdinandeum. Teil I: Leptopodomorpha: Familien Aepophilidae, Saldidae, Leptopodidae, Omaniidae. – *Beiträge zur Entomofaunistik* 22: 1–34.
- HEISS E., ECKELT A., LEDERWASCH M. & UNTERASINGER R. 2021b: Die Heteropterensammlung Ernst Heiss im Tiroler Landesmuseum Ferdinandeum. Teil II: Nepomorpha. – *Zeitschrift der Arbeitsgemeinschaft Österreichischer Entomologen* 73: 81–116.

- MALDONADO CAPRILES J. 1990: Systematic Catalogue of the Reduviidae of the World (Insecta: Heteroptera). – Caribbean Journal of Science, Special Edition i-x, 1–694.
- MOULET P. 2020: *Reduvius nigrinus* sp. nov. (Hemiptera, Heteroptera, Reduviidae, Reduviinae) from Turkish Anatolia. – Journal of the Heteroptera of Turkey 2(2): 75–80.
- PUTSHKOV P.V. & MOULET P. 2009: Hémiptères Reduviidae d'Europe Occidentale. – Faune de France 92: 1–668.
- PUTSHKOV P.V. & PUTSHKOV V.G. 1996: Family Reduviidae Latreille, 1807 – In: AUKEMA B. & RIEGER C. (eds.): Catalogue of the Heteroptera of the Palaearctic Region. Vol. 2 – The Netherlands Entomological Society, Amsterdam, 148–265.
- RÉDEI D. & TSAI J.F. 2009: A new species of *Gallobelgicus* Distant, 1906 from Taiwan (Insecta: Heteroptera: Reduviidae: Saicinae). – Annalen des Naturhistorischen Museum Vienna 110: 77–84.

### Addresses of the authors

DI Dr. Ernst HEISS, Josef Schraffl Strasse 2a, 6020 Innsbruck, Austria. E-Mail: aradus@aon.at  
Mag. Andreas ECKELT, Manfred LEDERWASCH, Mag. Romed UNTERASINGER,  
Tiroler Landesmuseum Ferdinandeum, Naturwissenschaftliche Sammlungen,  
Sammlungs- und Forschungszentrum SFZ, Krajcncstraße 1, 6060 Hall i. T., Austria.  
E-Mail: a.eckelt@tiroler-landesmuseen.at, m.lederwasch@tiroler-landesmuseen.at,  
r.unterasinger@tiroler-landesmuseen.at

# ZOBODAT - [www.zobodat.at](http://www.zobodat.at)

Zoologisch-Botanische Datenbank/Zoological-Botanical Database

Digitale Literatur/Digital Literature

Zeitschrift/Journal: [Entomologica Austriaca](#)

Jahr/Year: 2022

Band/Volume: [0029](#)

Autor(en)/Author(s): Heiss Ernst, Eckelt Andreas, Lederwasch Manfred,  
Unterasinger Romed Josef

Artikel/Article: [The Heteroptera Collection Ernst Heiss at the Tiroler Landesmuseum Ferdinandeum. Part III: Cimicomorpha: Family Reduviidae 39-85](#)